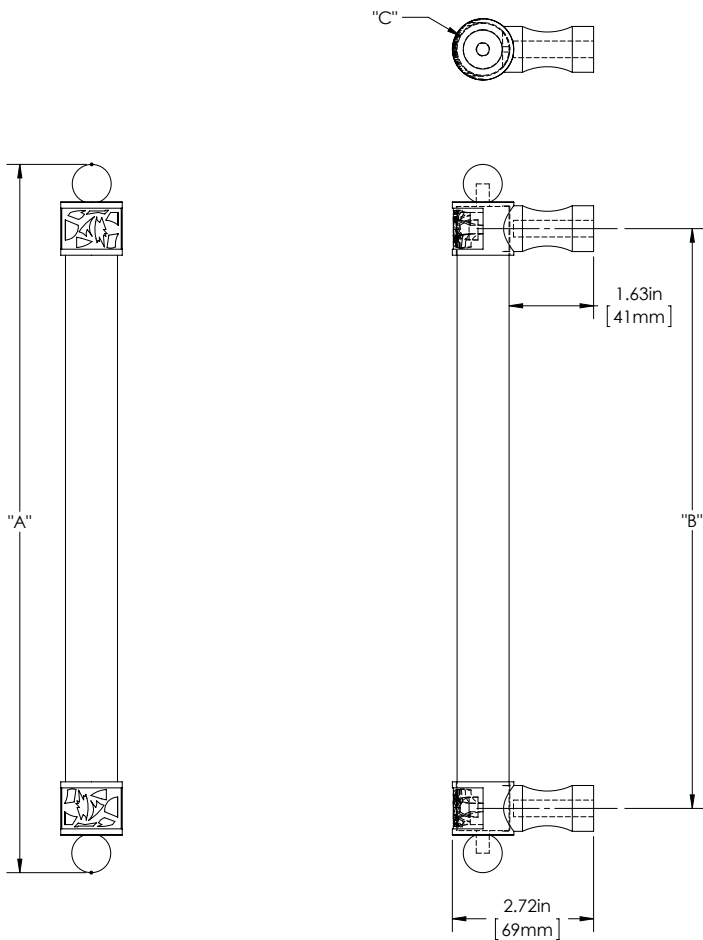


ATLANTIC ATL

ATLANTIC 1

100 SERIES (MEDIUM APPLICATIONS)



**Product Description:**  
1" Solid Round Acrylic Grip with Filigree End Caps, 3/4" Ball Finials and Hourglass Mounts in Brass

Material:  
Grip - Acrylic  
Mount(s) - Brass

**Finish Description:**  
Grip -AC, Acrylic Clear; AF, Acrylic Frosted  
Mount(s) - US11, AGB Aged Brass; US5, ATB Antique Brass; US3, PLB Polished Brass; US4 SNB Satin Brass; ORB Oil Rubbed Bronze; PLC Polished Chrome; SNC Satin Chrome; PLN Polished Nickel; SNN Satin Nickel; US19, MBK Matte Black PC; US10B, LTH Lithonia

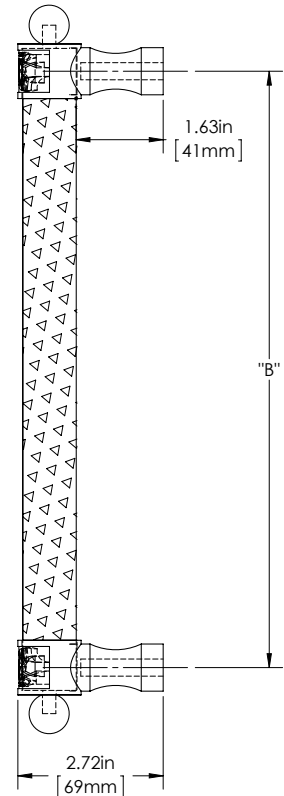
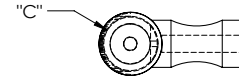
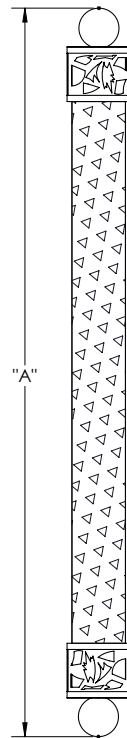
Custom sizes & finishes available upon request.

Overall Length "A"	Center To Center "B"	Overall Diameter "C"
9"(229mm)	7"(178mm)	5/8"(16mm)
12"(305mm)	9 1/2"(241mm)	1"(25mm)
18"(457mm)	15 1/2"(394mm)	1"(25mm)
24"(610mm)	21 1/2"(546mm)	1"(25mm)

# ATLANTIC ATL

ATLANTIC 2

## 100 SERIES (MEDIUM APPLICATIONS)



### Product Description:

1" Tubular Round Acrylic Grip filled with Austrian Crystals, Filigree End Caps, 3/4" Ball Finials and Hourglass Mounts in Brass

### Material:

Grip - Acrylic

Mount(s) - Brass

### Finish Description:

Grip - AC, Acrylic Clear; AF, Acrylic Frosted

Mount(s) - US11, AGB Aged Brass; US5, ATB Antique Brass; US3, PLB Polished Brass; US4, SNB Satin Brass; US10B, ORB Oil Rubbed Bronze; US26, PLC Polished Chrome; US26D, SNC Satin Chrome; US14, PLN Polished Nickel; US15, SNN Satin Nickel; US19, MBK Matte Black PC; US10B, LTH Lithonia

Custom sizes & finishes available upon request.

Overall Length "A"	Center To Center "B"	Overall Diameter "C"
9"(229mm)	7"(178mm)	5/8"(16mm)
12"(305mm)	9 1/2"(241mm)	1"(25mm)
18"(457mm)	15 1/2"(394mm)	1"(25mm)
24"(610mm)	21 1/2"(546mm)	1"(25mm)

Dimensions are approximate and provided for reference purposes only