

BOISE

BSE

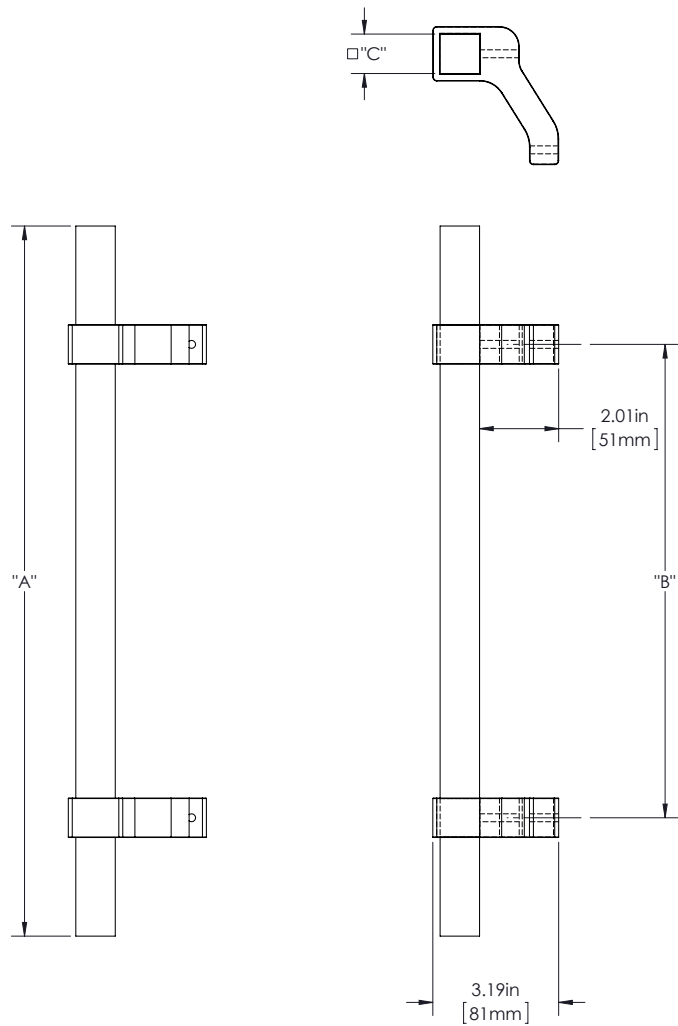
BOISE 1

100 SERIES (MEDIUM APPLICATIONS)

GRIP: HARDWOOD

MOUNT: OFFSET (F)

MOUNT MATERIAL: ALUMINUM (AL)



Product Description:
1" Solid Square Wood Grip with Wrap Around Offset Square Mounts

Material:
Grip - Hardwood
Mount(s) - Aluminum

Finish Description:
Grip - Cherry, Bubinga, Ipe, Jatoba, Mahogany, White Oak, Teak, Black Walnut
Mount(s) - US 28, BAL Brushed Aluminum, US19, MBK Matte Black PC; US10B, LTH Lithonia PC

Custom sizes & finishes available upon request.

Overall Length "A"	Center To Center "B"	Overall Diameter "C"
12"(305mm)	8"(203mm)	1"(25mm)
24"(610mm)	18"(457mm)	1"(25mm)
36"(914mm)	24"(610mm)	1"(25mm)
48"(1219mm)	36"(914mm)	1"(25mm)

BOISE

BSE

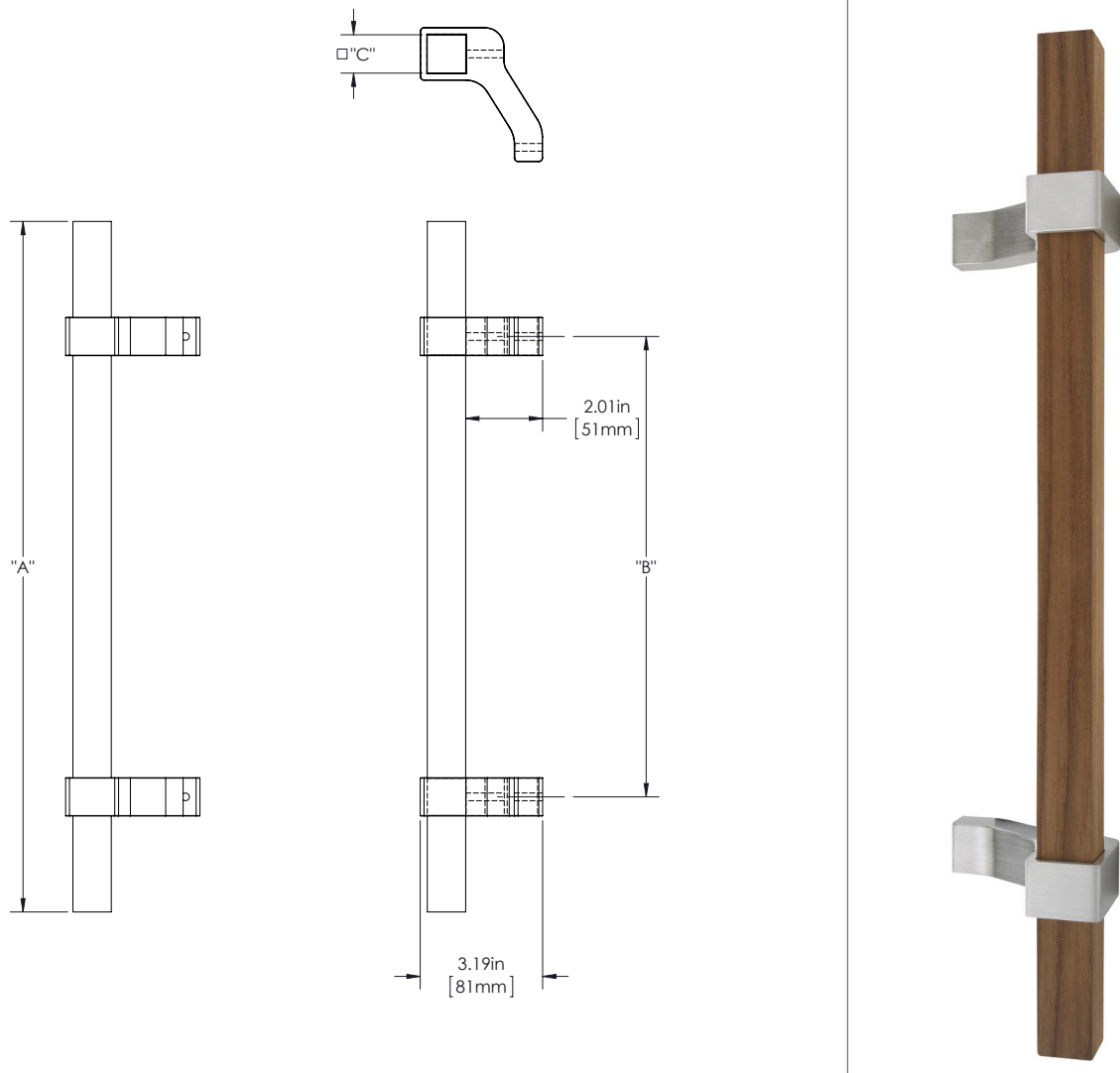
BOISE 1

100 SERIES (MEDIUM APPLICATIONS)

GRIP: HARDWOOD

MOUNT: OFFSET (F)

MOUNT MATERIAL: STAINLESS STEEL 304 (S4)



Product Description:
1" Solid Square Wood Grip with Wrap Around Offset Square Mounts

Material:
Grip - Hardwood
Mount(s) - Stainless Steel

Finish Description:
Grip - Cherry, Bubinga, Ipe, Jatoba, Mahogany, White Oak, Teak, Black Walnut
Mount(s) - US32D, BSS Brushed Stainless; US32, PSS Polished Stainless; US19, MBK Matte Black PC; US10B, LTH Lithonia PC

Custom sizes & finishes available upon request.

Overall Length "A"	Center To Center "B"	Overall Diameter "C"
12"(305mm)	8"(203mm)	1"(25mm)
24"(610mm)	18"(457mm)	1"(25mm)
36"(914mm)	24"(610mm)	1"(25mm)
48"(1219mm)	36"(914mm)	1"(25mm)

BOISE

BSE

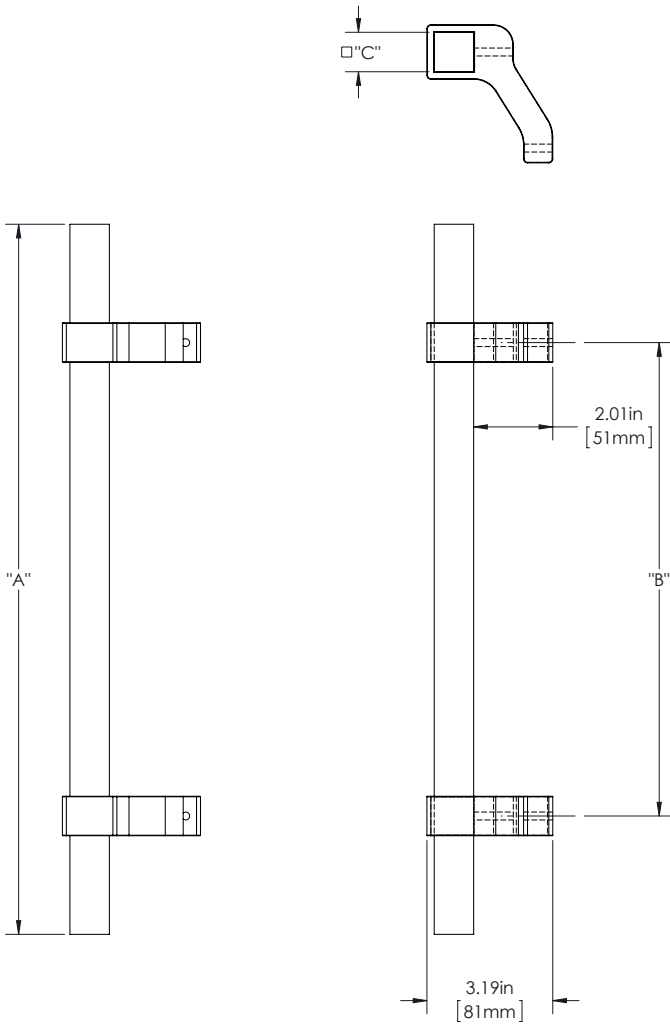
BOISE 1

100 SERIES (MEDIUM APPLICATIONS)

GRIP: HARDWOOD

MOUNT: OFFSET (F)

MOUNT MATERIAL: BRASS (BR)



Product Description:
1" Solid Square Wood Grip with Wrap Around Offset Square Mounts

Material:
Grip - Hardwood
Mount(s) - Brass

Finish Description:
Grip - Cherry, Bubinga, Ipe, Jatoba, Mahogany, White Oak, Teak, Black Walnut
Mount(s) - US11, AGB Aged Brass; US5, ATB Antique Brass; US3, PLB Polished Brass; US4, SNB Satin Brass; US10B, ORB Oil Rubbed Bronze; US26, PLC Polished Chrome; US26D, SNC Satin Chrome; US14, PLN Polished Nickel; US15, SNN Satin Nickel; US19, MBK Matte Black PC; US10B, LTH Lithonia PC

Overall Length "A"	Center To Center "B"	Overall Diameter "C"
12"(305mm)	8"(203mm)	1"(25mm)
24"(610mm)	18"(457mm)	1"(25mm)
36"(914mm)	24"(610mm)	1"(25mm)
48"(1219mm)	36"(914mm)	1"(25mm)

Custom sizes & finishes available upon request.

Dimensions are approximate and provided for reference purposes only

BOISE

BSE

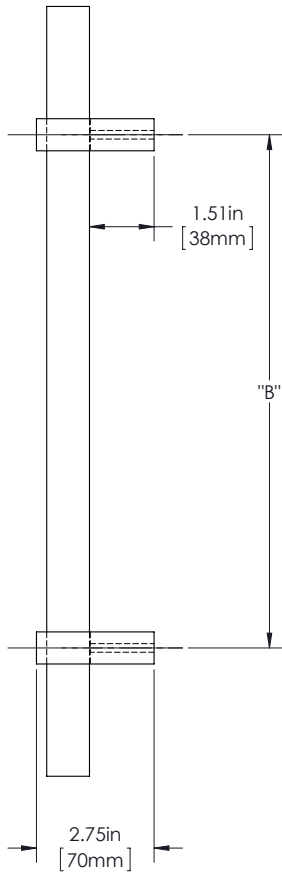
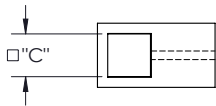
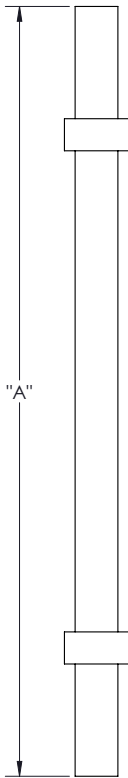
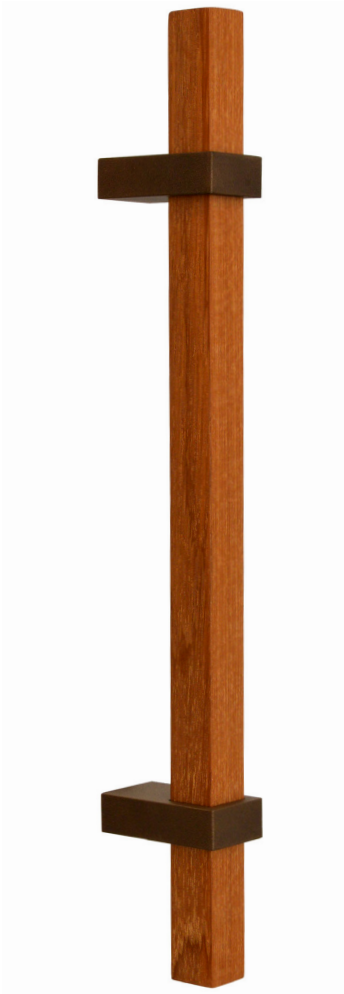
BOISE 2

100 SERIES (MEDIUM APPLICATIONS)

GRIP: HARWOOD

MOUNT: STRAIGHT (S)

MOUNT MATERIAL: BRASS (BR)



Product Description:

1" Solid Square Wood Grip with Wrap Around Straight Square Mounts

Material:

Grip - Hardwood
Mount(s) - Brass

Finish Description:

Grip - Cherry, Bubinga, Ipe, Jatoba, Mahogany, White Oak, Teak, Black Walnut
Mount(s) - US11, AGB Aged Brass; US5, ATB Antique Brass; US3, PLB Polished Brass; US4, SNB Satin Brass; US10B, ORB Oil Rubbed Bronze; US26, PLC Polished Chrome; US26D, SNC Satin Chrome; US14, PLN Polished Nickel; US15, SNN Satin Nickel; US19, MBK Matte Black PC; US10B, LTH Lithonia PC

Overall Length "A"	Center To Center "B"	Overall Diameter "C"
12"(305mm)	8"(203mm)	1"(25mm)
24"(610mm)	18"(457mm)	1"(25mm)
36"(914mm)	24"(610mm)	1"(25mm)
48"(1219mm)	36"(914mm)	1"(25mm)

Custom sizes & finishes available upon request.

Dimensions are approximate and provided for reference purposes only

BOISE

BSE

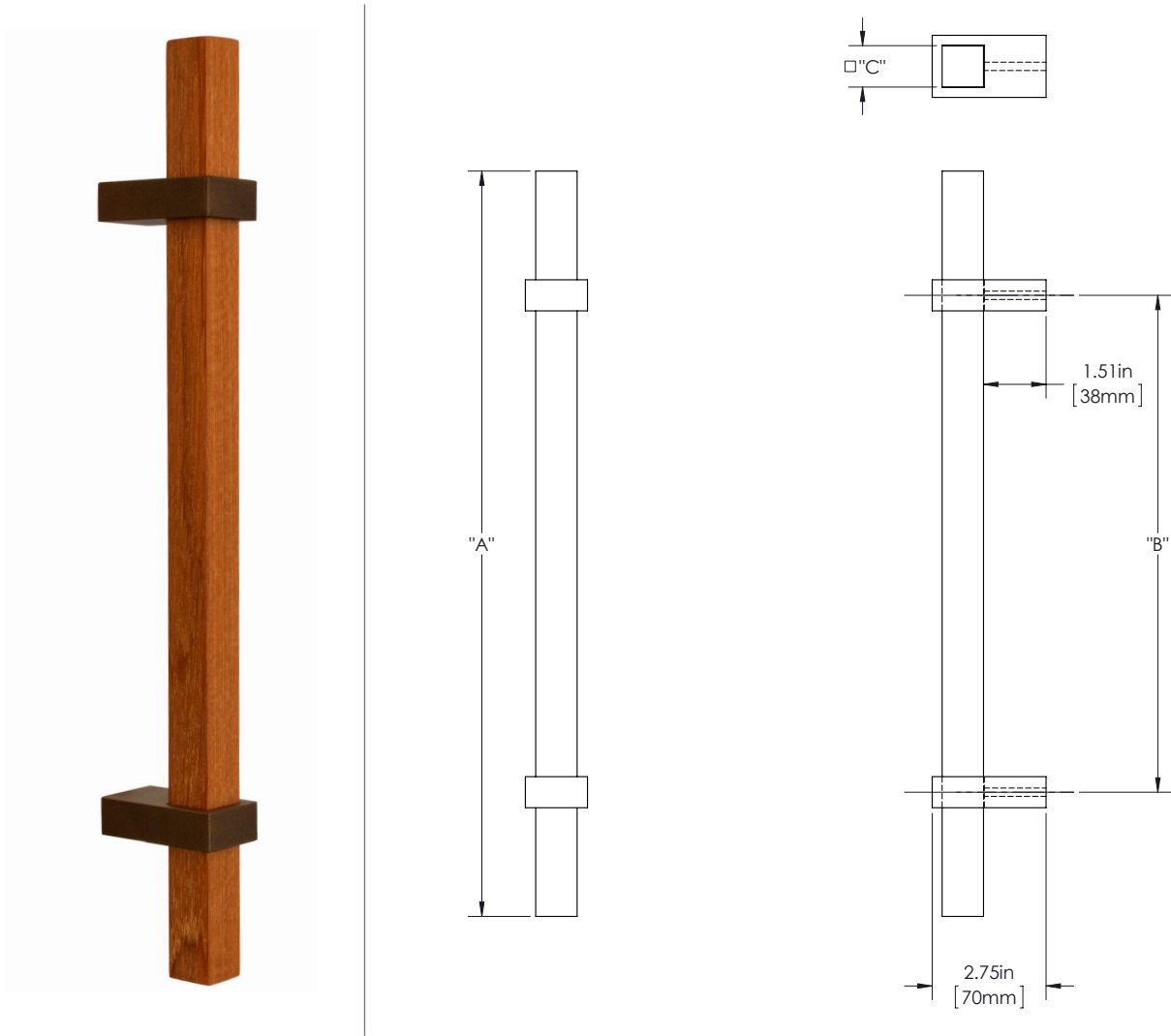
BOISE 2

100 SERIES (MEDIUM APPLICATIONS)

GRIP: HARWOOD

MOUNT: STRAIGHT (S)

MOUNT MATERIAL: STAINLESS STEEL 304 (S4)



Product Description:
1" Solid Square Wood Grip with Wrap Around Straight Square Mounts

Material:
Grip - Hardwood
Mount(s) - Stainless Steel

Finish Description:
Grip - Cherry, Bubinga, Ipe, Jatoba, Mahogany, White Oak, Teak, Black Walnut
Mount(s) - US32D, BSS Brushed Stainless; US32, PSS Polished Stainless; US19, MBK Matte Black PC; US10B, LTH Lithonia PC

Custom sizes & finishes available upon request.

Overall Length "A"	Center To Center "B"	Overall Diameter "C"
12"(305mm)	8"(203mm)	1"(25mm)
24"(610mm)	18"(457mm)	1"(25mm)
36"(914mm)	24"(610mm)	1"(25mm)
48"(1219mm)	36"(914mm)	1"(25mm)

BOISE

BSE

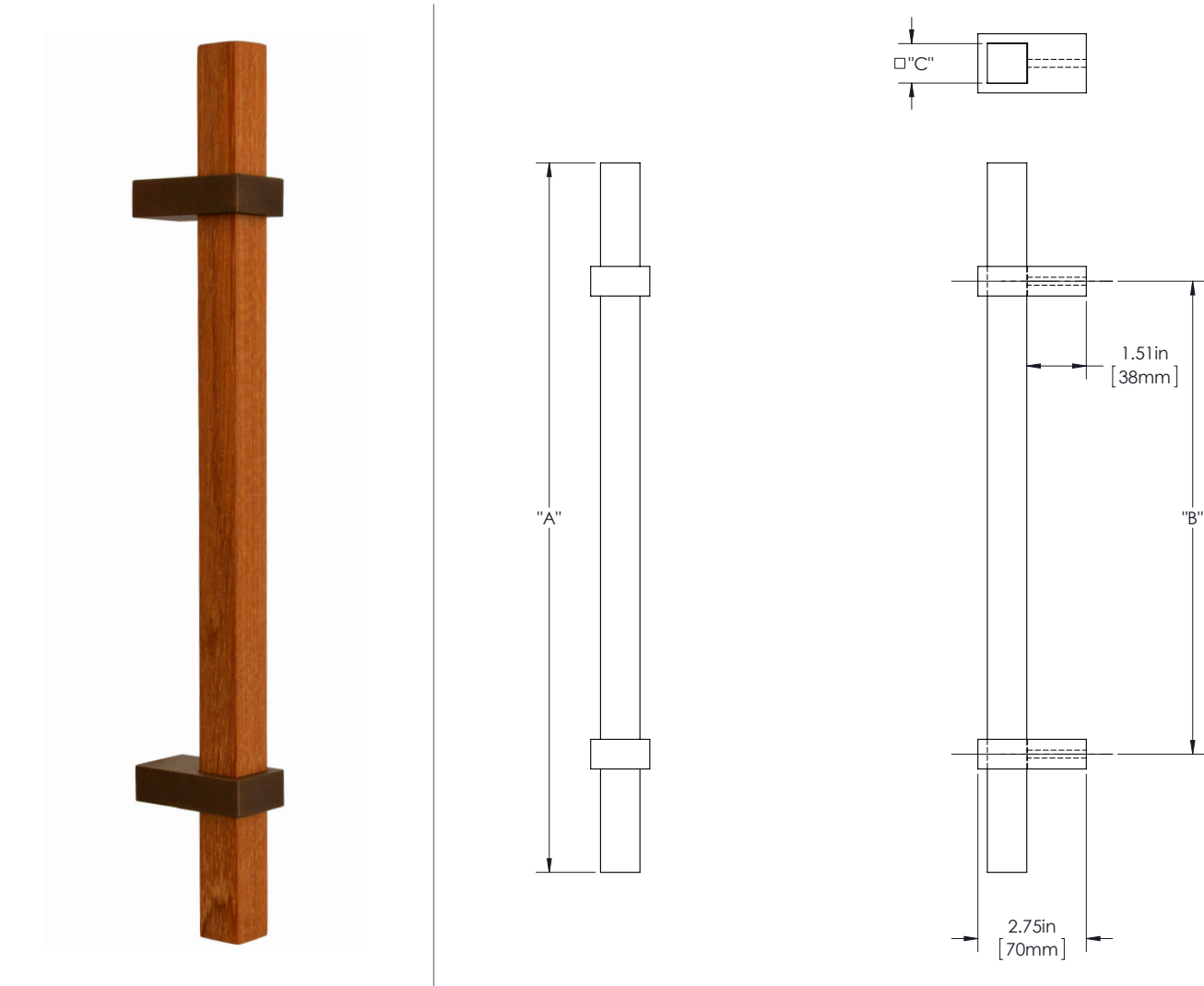
BOISE 2

100 SERIES (MEDIUM APPLICATIONS)

GRIP: HARWOOD

MOUNT: STRAIGHT (S)

MOUNT MATERIAL: ALUMINUM (AL)



Product Description:
1" Solid Square Wood Grip with Wrap Around Straight Square Mounts

Material:
Grip - Hardwood
Mount(s) - Aluminum

Finish Description:
Grip - Cherry, Bubinga, Ipe, Jatoba, Mahogany, White Oak, Teak, Black Walnut
Mount(s) - US 28, BAL Brushed Aluminum, US19, MBK Matte Black PC; US10B, LTH Lithonia PC

Custom sizes & finishes available upon request.

Overall Length "A"	Center To Center "B"	Overall Diameter "C"
12"(305mm)	8"(203mm)	1"(25mm)
24"(610mm)	18"(457mm)	1"(25mm)
36"(914mm)	24"(610mm)	1"(25mm)
48"(1219mm)	36"(914mm)	1"(25mm)