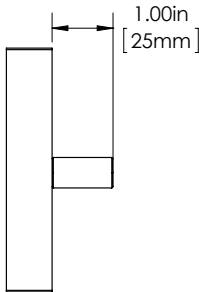
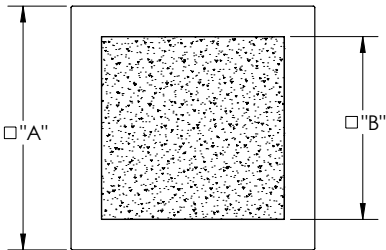
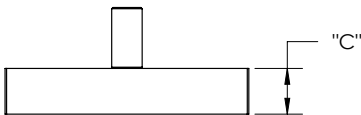


BROOKS

BRK

BOULDER 3

- LIGHT APPLICATION (1")
- MOUNT: HAMMERED (HMR)
- MOUNT: STRAIGHT
- MOUNT MATERIAL: BRASS (BR)



Product Description:
3/8" Solid Square Pull Knob with 4" X 4" Face, Hammered Center Insert, Smooth Border and Straight Smooth Mount Non-Functioning, Non-Rotating

Material:
Brass

Finish Description:
US11, AGB Aged Brass; US5, ATB Antique Brass; US3, PLB Polished Brass; US4, SNB Satin Brass; US10B, ORB Oil Rubbed Bronze; US26, PLC Polished Chrome; US26D, SNC Satin Chrome; US14, PLN Polished Nickel; US15, SNN Satin Nickel; US19, MBK Matte Black PC; US10B, LTH Lithonia PC

Overall Size "A"	Inlay Size "B"	Thickness "C"
4 x 4"(102x102mm)	3 x 3" (76x76mm)	3 1/4"(83mm)

Custom sizes & finishes available upon request.

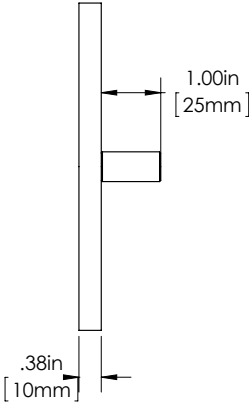
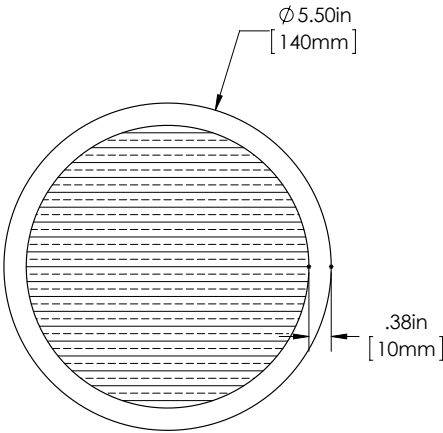
Dimensions are approximate and provided for reference purposes only

BROOKS 1

BRK

BROOKS 1

- APPLICATION LIGHT (1")
- MOUNT: REEDED HAMMERED (RDH)
- MOUNT: STRAIGHT (S)
- MOUNT MATERIAL: BRASS (BR)



Product Description:
3/8" Solid Full Circle Grip with 5 1/2" Face, Reeded - Hammered Center, 1/4" Smooth Border and Smooth Straight Round Mount

Material:
Brass

Finish Description:
US11, AGB Aged Brass; US5, ATB Antique Brass; US3, PLB Polished Brass; US4, SNB Satin Brass; US10B, ORB Oil Rubbed Bronze; US26, PLC Polished Chrome; US26D, SNC Satin Chrome; US14, PLN Polished Nickel; US15, SNN Satin Nickel; US19, MBK Matte Black PC; US10B, LTH Lithonia PC

Overall Size	Center To Center	Thickness
5 1/2"(140mm) Diameter	N/A	3/8"(10mm)

Custom sizes & finishes available upon request.

BROOKS 2

BRK

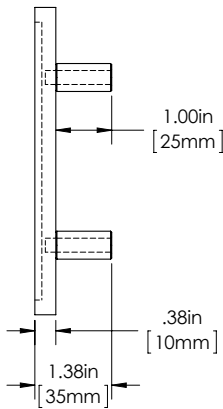
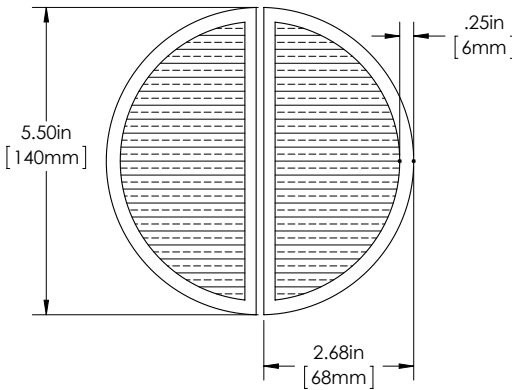
BROOKS 2

APPLICATION LIGHT (2")

MOUNT: REEDED HAMMERED (RDH)

MOUNT: STRAIGHT (S)

MOUNT MATERIAL: BRASS (BR)



Product Description:
3/8" Solid Half Circle (Moon) Grip with 2 3/4" Face, Reeded - Hammered Center, 1/4" Smooth Border and Smooth Straight Round Mount

Material:
Brass

Finish Description:
US11, AGB Aged Brass; US5, ATB Antique Brass; US3, PLB Polished Brass; US4, SNB Satin Brass; US10B, ORB Oil Rubbed Bronze; US26, PLC Polished Chrome; US26D, SNC Satin Chrome; US14, PLN Polished Nickel; US15, SNN Satin Nickel; US19, MBK Matte Black PC; US10B, LTH Lithonia PC

Overall Height	Overall Width	Thickness
5 1/2"(140mm)	2 3/4"(70mm)	3/8"(10mm)

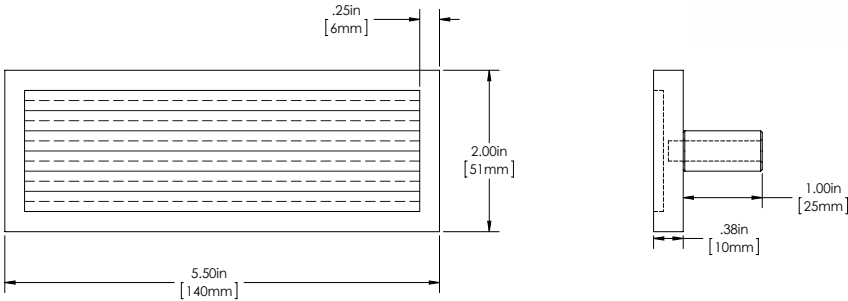
Custom sizes & finishes available upon request.

BROOKS 3

BRK

BROOKS 3

- APPLICATION LIGHT (2")
- MOUNT: REEDED HAMMERED (RDH)
- MOUNT: STRAIGHT (S)
- MOUNT MATERIAL: BRASS (BR)



Product Description:
3/8" Solid Rectangle Grip with 5 1/2" x 2" Face, Reeded - Hammered Center, 1/4" Smooth Border and Smooth Straight Round Mount

Material:
Brass

Finish Description:
US11, AGB Aged Brass; US5, ATB Antique Brass; US3, PLB Polished Brass; US4, SNB Satin Brass; US10B, ORB Oil Rubbed Bronze; US26, PLC Polished Chrome; US26D, SNC Satin Chrome; US14, PLN Polished Nickel; US15, SNN Satin Nickel; US19, MBK Matte Black PC; US10B, LTH Lithonia PC

Overall Height	Overall Width	Thickness
2"(51mm)	5 1/2"(140mm)	3/8"(10mm)

Custom sizes & finishes available upon request.

Dimensions are approximate and provided for reference purposes only