

# CABINET CBN

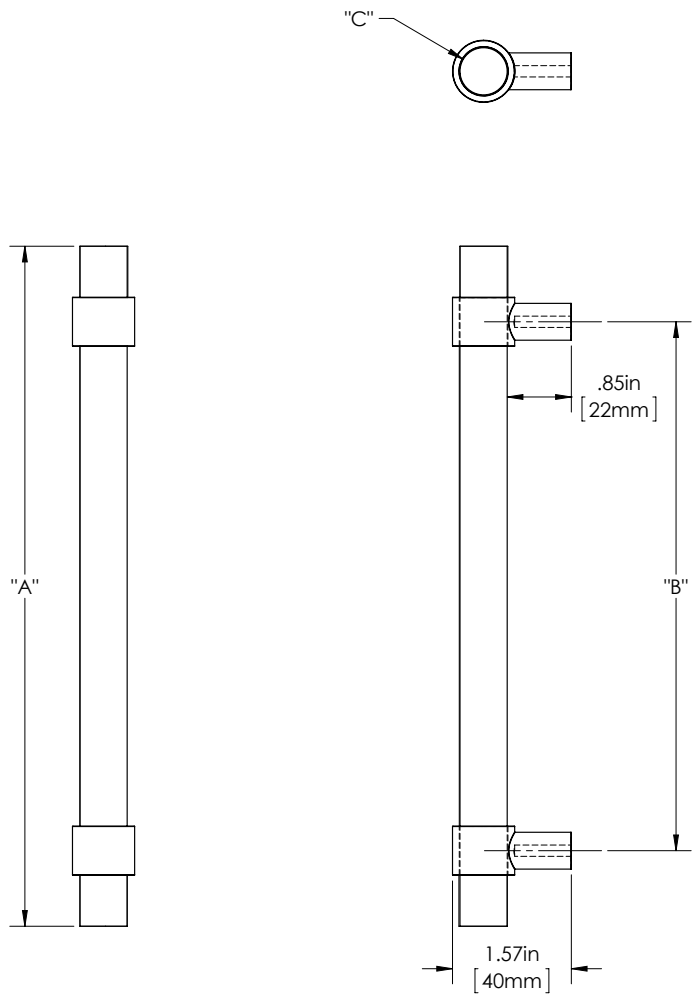
CABINET 1

625 SERIES (MEDIUM APPLICATIONS)

GRIP: CAST ACRYLIC

MOUNT: STRAIGHT (S)

MOUNT MATERIAL: BRASS (BR)



**Product Description:**  
5/8" Solid Round Acrylic Grip with Wrap Around Straight Round Mounts in Brass

**Material:**  
Grip - Cast Acrylic  
Mount(s) - Brass

**Finish Description:**  
Grip -ACC, Acrylic Clear; ACF, Acrylic Frosted  
Mount(s) - US11, AGB Aged Brass; US5, ATB Antique Brass; US3, PLB Polished Brass; US4, SNB Satin Brass; US10B, ORB Oil Rubbed Bronze; US26, PLC Polished Chrome; US26D, SNC Satin Chrome; US14, PLN Polished Nickel; US15, SNN Satin Nickel; US19, MBK Matte Black PC; US10B, LTH Lithonia PC

Custom sizes & finishes available upon request.

Overall Length "A"	Center To Center "B"	Overall Diameter "C"
5"(127mm)	3"(76mm)	5/8"(16mm)
7"(178mm)	5"(127mm)	5/8"(16mm)
9"(229mm)	7"(178mm)	5/8"(16mm)
11"(279mm)	9"(229mm)	5/8"(16mm)

CABINET CBN

CABINET 2

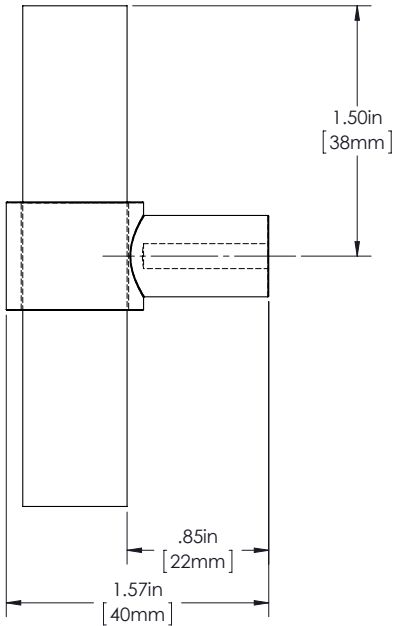
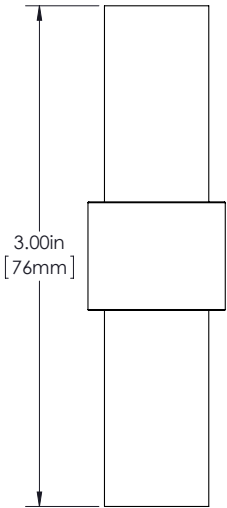
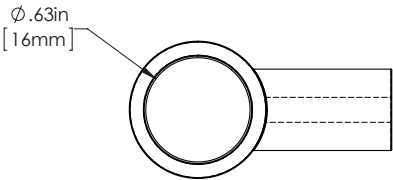
625 SERIES (MEDIUM APPLICATIONS)

GRIP: CAST ACRYLIC

MOUNT: STRAIGHT (S)

MOUNT MATERIAL: BRASS (BR)

TEE: T



Product Description:

5/8" Solid Round Acrylic Grip with Wrap Around Straight Round Mount in Brass

Material:

Grip - Cast Acrylic  
Mount(s) - Brass

Finish Description:

Grip -ACC, Acrylic Clear; ACF, Acrylic Frosted  
Mount(s) - US11, AGB Aged Brass; US5, ATB Antique Brass; US3, PLB Polished Brass; US4, SNB Satin Brass; US10B, ORB Oil Rubbed Bronze; US26, PLC Polished Chrome; US26D, SNC Satin Chrome; US14, PLN Polished Nickel; US15, SNN Satin Nickel; US19, MBK Matte Black PC; US10B, LTH Lithonia PC

Overall Length	Center To Center	Overall Diameter
3"(76mm)	N/A	5/8"(16mm)

Custom sizes & finishes available upon request.

Dimensions are approximate and provided for reference purposes only

# CABINET CBN

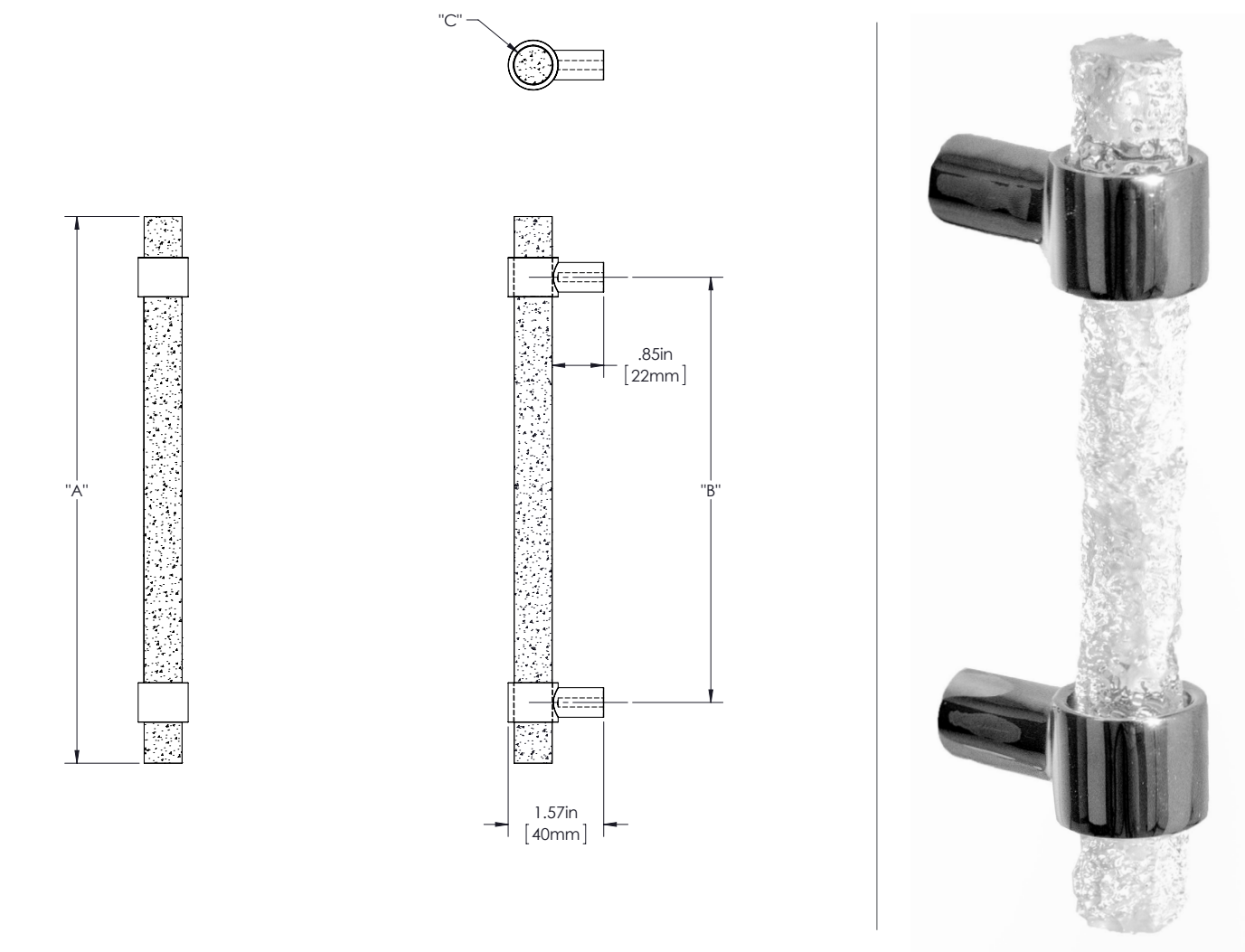
CABINET 3

750 SERIES (LIGHT APPLICATIONS)

GRIP: ACRYLIC CHISELED (ACH)

MOUNT: STRAIGHT (S)

MOUNT MATERIAL: BRASS (BR)



**Product Description:**  
3/4" Solid Round Hand Chiseled Acrylic Grip with Wrap Around  
Straight Round Mounts in Brass

**Material:**  
Grip - Cast Acrylic  
Mount(s) - Brass

**Finish Description:**  
Grip - ACH, Acrylic Chiseled  
Mount(s) - US11, AGB Aged Brass; US5, ATB Antique Brass; US3, PLB  
Polished Brass; US4, SNB Satin Brass; US10B, ORB Oil Rubbed Bronze;  
US26, PLC Polished Chrome; US26D, SNC Satin Chrome; US14, PLN  
Polished Nickel; US15, SNN Satin Nickel; US19, MBK Matte Black PC;  
US10B, LTH Lithonia PC

Overall Length "A"	Center To Center "B"	Overall Diameter "C"
5"(127mm)	3"(76mm)	3/4"(19mm)
7"(178mm)	5"(127mm)	3/4"(19mm)
9"(229mm)	7"(178mm)	3/4"(19mm)

Custom sizes & finishes available upon request.

Dimensions are approximate and provided for reference purposes only

# CABINET CBN

CABINET 4

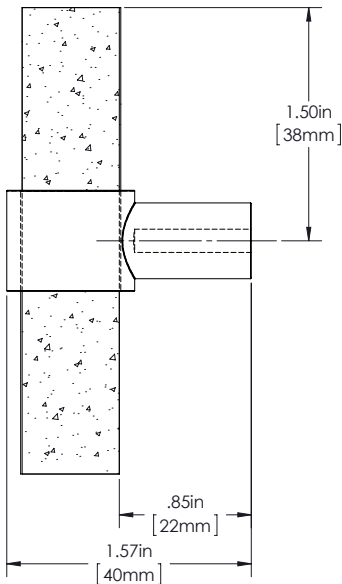
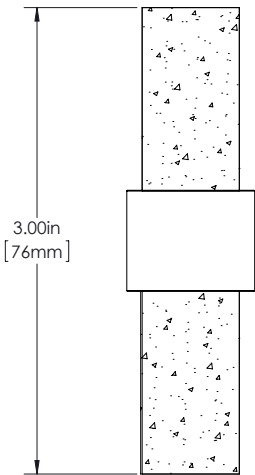
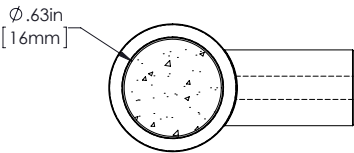
750 SERIES (LIGHT APPLICATIONS)

GRIP: ACRYLIC CHISELED (ACH)

MOUNT: STRAIGHT (S)

MOUNT MATERIAL: BRASS (BR)

TEE: T



**Product Description:**  
3/4" Solid Round Hand Chiseled Acrylic Grip with Wrap Around  
Straight Round Mount in Brass

**Material:**  
Grip - Cast Acrylic  
Mount(s) - Brass

**Finish Description:**  
Grip -ACH, Acrylic Chiseled  
Mount(s) - US11, AGB Aged Brass; US5, ATB Antique Brass; US3, PLB  
Polished Brass; US4, SNB Satin Brass; US10B, ORB Oil Rubbed Bronze;  
US26, PLC Polished Chrome; US26D, SNC Satin Chrome; US14, PLN  
Polished Nickel; US15, SNN Satin Nickel; US19, MBK Matte Black PC;  
US10B, LTH Lithonia PC

Overall Length	Center To Center	Overall Diameter
3"(76mm)	N/A	3/4"(19mm)

Custom sizes & finishes available upon request.

# CABINET CBN

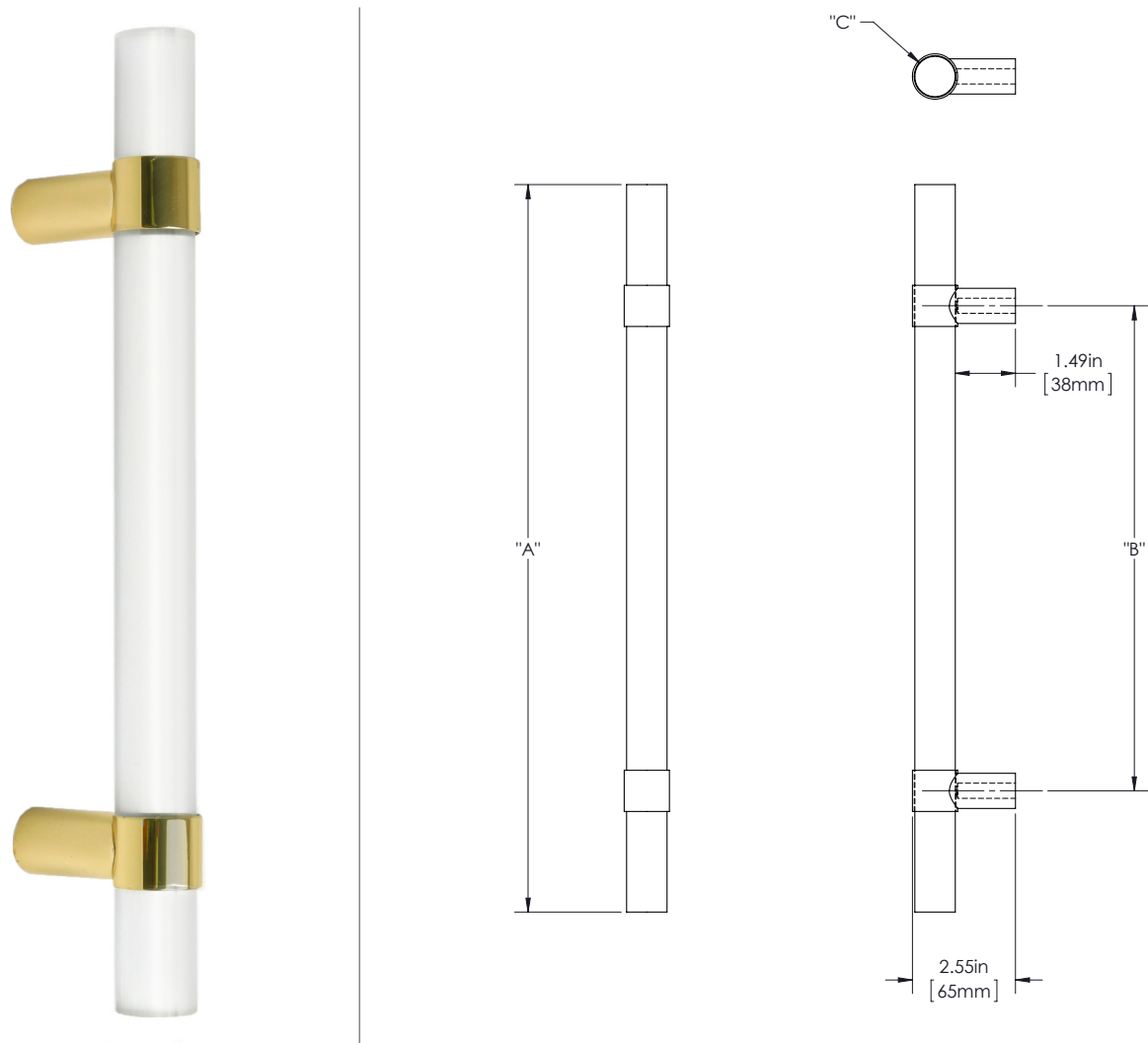
PACIFIC 2

100 SERIES (MEDIUM APPLICATIONS)

GRIP: CAST ACRYLIC

MOUNT: STRAIGHT (S)

MOUNT MATERIAL: BRASS (BR)



**Product Description:**  
1" Solid Round Acrylic Grip with Wrap Around Straight Round Mounts in Brass

**Material:**  
Grip - Cast Acrylic  
Mount(s) - Brass

**Finish Description:**  
Grip -ACC, Acrylic Clear, ACF, Acrylic Frosted  
Mount(s) - US11, AGB Aged Brass; US5, ATB Antique Brass; US3, PLB Polished Brass; US4, SNB Satin Brass; US10B, ORB Oil Rubbed Bronze; US26, PLC Polished Chrome; US26D, SNC Satin Chrome; US14, PLN Polished Nickel; US15, SNN Satin Nickel; US19, MBK Matte Black PC; US10B, LTH Lithonia PC

Custom sizes & finishes available upon request.

Overall Length "A"	Center To Center "B"	Overall Diameter "C"
12"(305mm)	8"(203mm)	1"(25mm)
24"(610mm)	18"(457mm)	1"(25mm)
36"(914mm)	24"(610mm)	1"(25mm)
48"(1219mm)	30"(762mm)	1"(25mm)
60"(1524mm)	36"(914mm)	1"(25mm)
72"(1829mm)	40"(1016mm)	1"(25mm)
84"(2134mm)	44"(1118mm)	1"(25mm)

# CABINET CBN

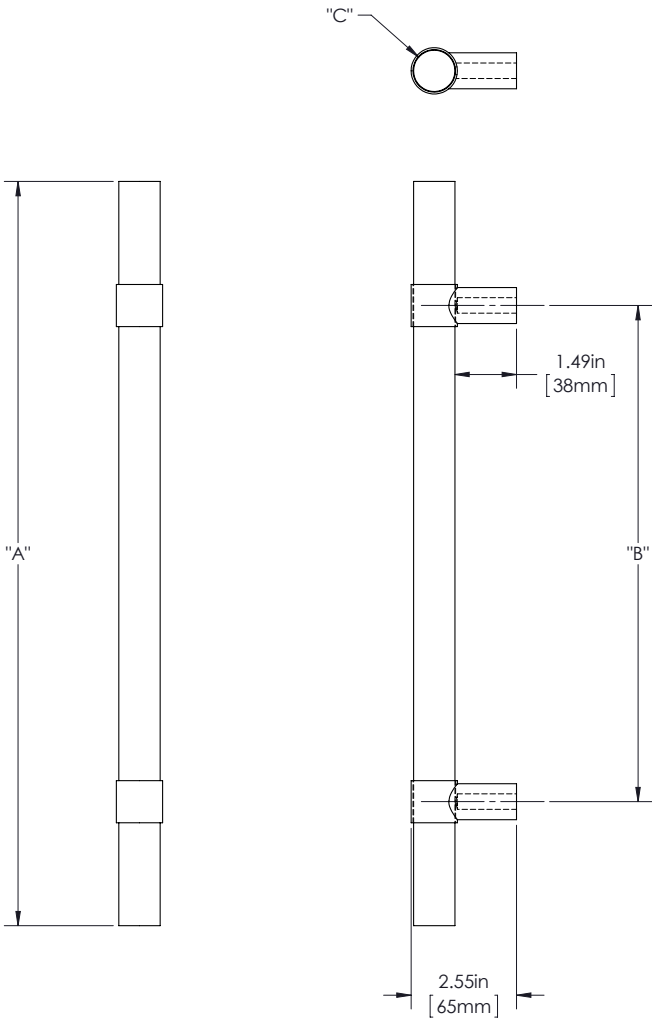
PACIFIC 3

100 SERIES (MEDIUM APPLICATIONS)

GRIP: CAST ACRYLIC

MOUNT: STRAIGHT (S)

MOUNT MATERIAL: STAINLESS STEEL 304 (S4)



**Product Description:**  
1" Solid Round Acrylic Grip with Wrap Around Straight Round Mounts in Stainless Steel

**Material:**  
Grip - Cast Acrylic  
Mount(s) - Stainless Steel

**Finish Description:**  
Grip -ACC, Acrylic Clear, ACF, Acrylic Frosted  
Mount(s) - US32D, BSS Brushed Stainless; US32, PSS Polished Stainless; US19, MBK Matte Black PC; US10B, LTH Lithonia PC

Custom sizes & finishes available upon request.

Overall Length "A"	Center To Center "B"	Overall Diameter "C"
12"(305mm)	8"(203mm)	1"(25mm)
24"(610mm)	18"(457mm)	1"(25mm)
36"(914mm)	24"(610mm)	1"(25mm)
48"(1219mm)	30"(762mm)	1"(25mm)
60"(1524mm)	36"(914mm)	1"(25mm)
72"(1829mm)	40"(1016mm)	1"(25mm)
84"(2134mm)	44"(1118mm)	1"(25mm)

# CABINET CBN

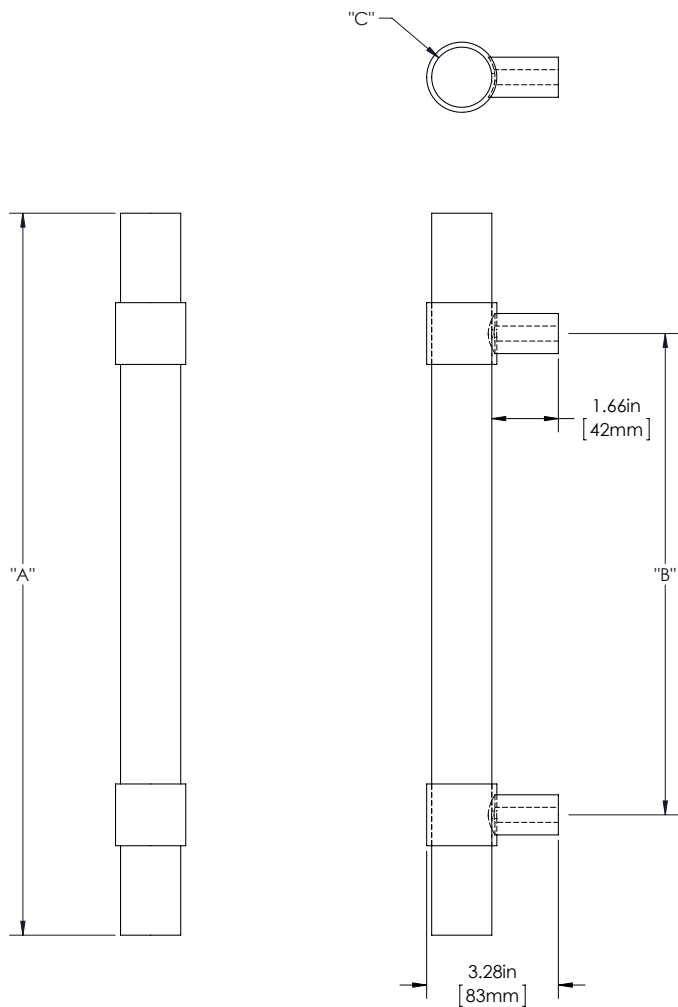
PACIFIC 5

150 SERIES (HEAVY APPLICATIONS)

GRIP: CAST ACRYLIC

MOUNT: STRAIGHT (S)

MOUNT MATERIAL: BRASS (BR)



**Product Description:**  
1 1/2" Solid Round Acrylic Grip with Wrap Around Straight Round Mounts in Brass

**Material:**  
Grip - Cast Acrylic  
Mount(s) - Brass

**Finish Description:**  
Grip -ACC, Acrylic Clear; ACF, Acrylic Frosted  
Mount(s) - US11, AGB Aged Brass; US5, ATB Antique Brass; US3, PLB Polished Brass; US4, SNB Satin Brass; US10B, ORB Oil Rubbed Bronze; US26, PLC Polished Chrome; US26D, SNC Satin Chrome; US14, PLN Polished Nickel; US15, SNN Satin Nickel; US19, MBK Matte Black PC; US10B, LTH Lithonia PC

Custom sizes & finishes available upon request.

Overall Length "A"	Center To Center "B"	Overall Diameter "C"
18"(457mm)	12"(305mm)	1 1/2"(38mm)
24"(610mm)	18"(457mm)	1 1/2"(38mm)
36"(914mm)	24"(610mm)	1 1/2"(38mm)
48"(1219mm)	36"(914mm)	1 1/2"(38mm)
60"(1524mm)	48"(1219mm)	1 1/2"(38mm)
72"(1829mm)	54"(1372mm)	1 1/2"(38mm)
84"(2134mm)	54"(1372mm)	1 1/2"(38mm)

# CABINET CBN

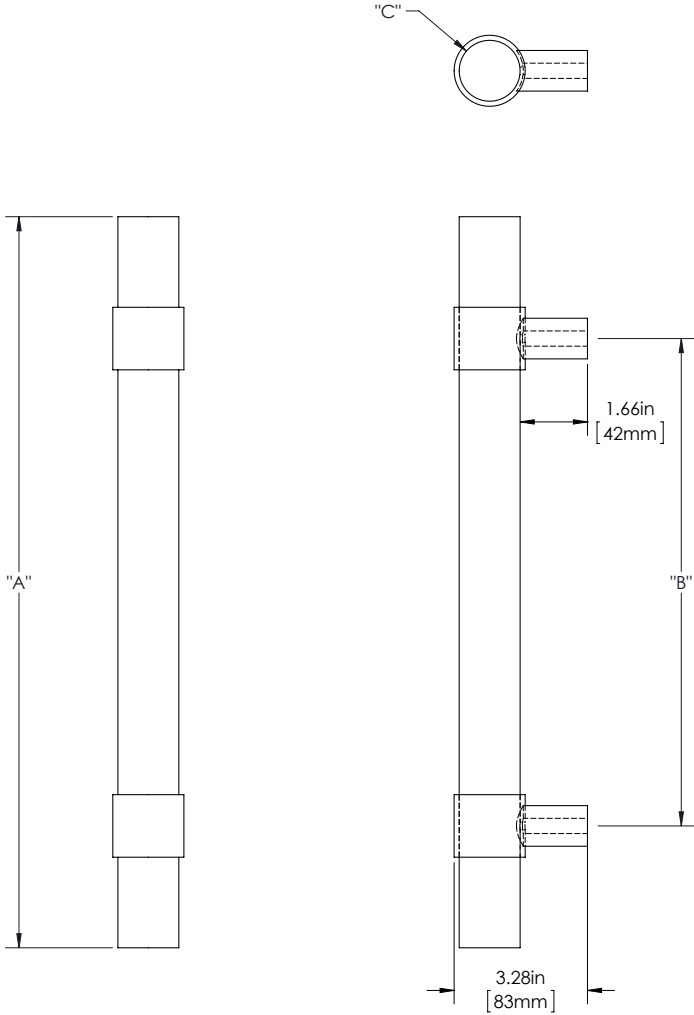
PACIFIC 6

150 SERIES (HEAVY APPLICATIONS)

GRIP: CAST ACRYLIC

MOUNT: STRAIGHT (S)

MOUNT MATERIAL: STAINLESS STEEL 304 (S4)



**Product Description:**  
1 1/2" Solid Round Acrylic Grip with Wrap Around Straight Round Mounts in Stainless Steel

**Material:**  
Grip - Cast Acrylic  
Mount(s) - Stainless Steel

**Finish Description:**  
Grip -ACC, Acrylic Clear, ACF, Acrylic Frosted  
Mount(s) - US32D, BSS Brushed Stainless; US32, PSS Polished Stainless; US19, MBK Matte Black PC; US10B, LTH Lithonia PC

Custom sizes & finishes available upon request.

Overall Length "A"	Center To Center "B"	Overall Diameter "C"
18"(457mm)	12"(305mm)	1 1/2"(38mm)
24"(610mm)	18"(457mm)	1 1/2"(38mm)
36"(914mm)	24"(610mm)	1 1/2"(38mm)
48"(1219mm)	36"(914mm)	1 1/2"(38mm)
60"(1524mm)	48"(1219mm)	1 1/2"(38mm)
72"(1829mm)	54"(1372mm)	1 1/2"(38mm)
84"(2134mm)	54"(1372mm)	1 1/2"(38mm)