

CASCADE 1CSD

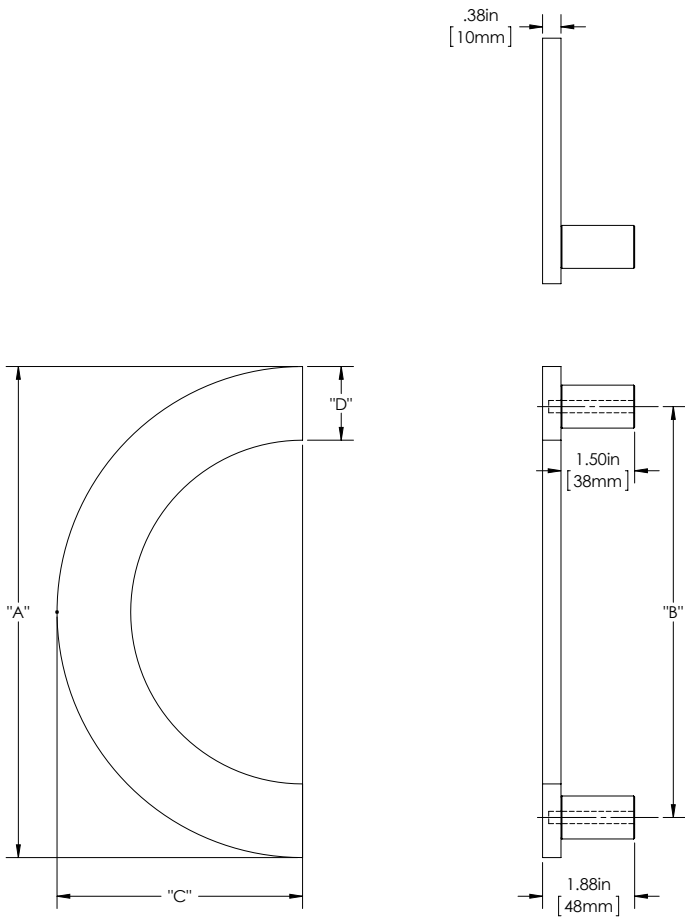
CASCADE 1

APPLICATION MEDIUM

MOUNT: SMOOTH (SMT)

MOUNT: STRAIGHT (S)

MOUNT MATERIAL: BRASS (BR)



Product Description:

3/8" Solid C-Shaped Grip with 3/4" Face and Straight Round Mounts

Material:
Brass

Finish Description:

US11, AGB Aged Brass; US5, ATB Antique Brass; US3, PLB Polished Brass; US4, SNB Satin Brass; US10B, ORB Oil Rubbed Bronze; US26, PLC Polished Chrome; US26D, SNC Satin Chrome; US14, PLN Polished Nickel; US15, SNN Satin Nickel; US19, MBK Matte Black PC; US10B, LTH Lithonia PC

Overall Height "A"	Center To Center "B"	Face "D"	Overall Width "C"
6"(152mm)	4 1/2"(114mm)	3/4"(19mm)	3"(76mm)
12"(229mm)	10 1/2"(267mm)	1 1/2"(38mm)	6"(152mm)

Custom sizes & finishes available upon request.

CASCADE 1

CSD

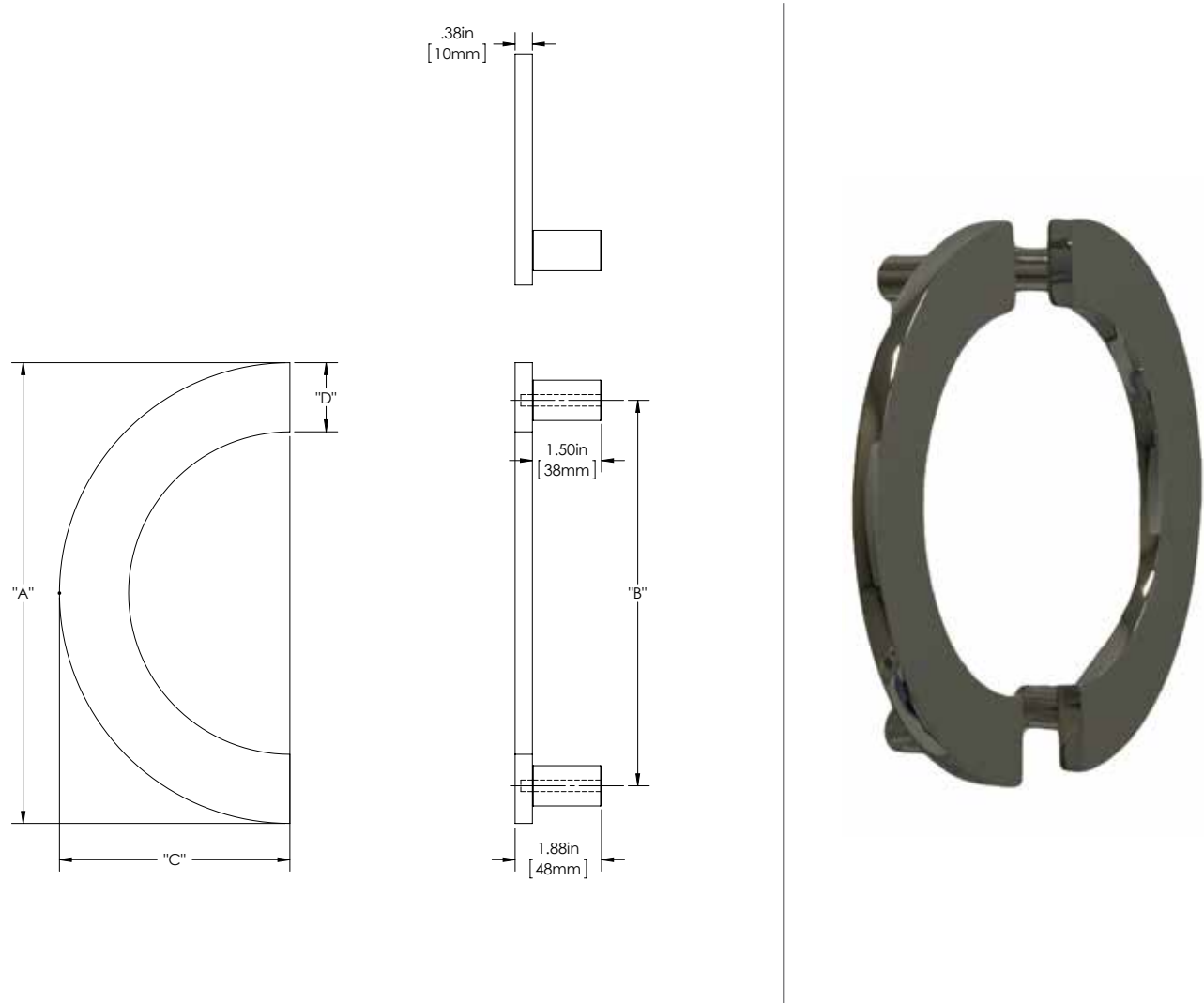
CASCADE 1

APPLICATION: MEDIUM

MOUNT: SMOOTH (SMT)

MOUNT: STRAIGHT (S)

MOUNT MATERIAL: ALUMINUM (AL)



Product Description:
3/8" Solid C-Shaped Grip with 3/4" Face and Straight Round Mounts

Material:
Aluminum

Finish Description:
US 28, BAL Brushed Aluminum, US19, MBK Matte Black PC; US10B, LTH Lithonia PC

Custom sizes & finishes available upon request.

Overall Height "A"	Center To Center "B"	Face "D"	Overall Width "C"
6"(152mm)	4 1/2"(114mm)	3/4"(19mm)	3"(76mm)
12"(229mm)	10 1/2"(267mm)	1 1/2"(38mm)	6"(152mm)

CASCADE 1

CSD

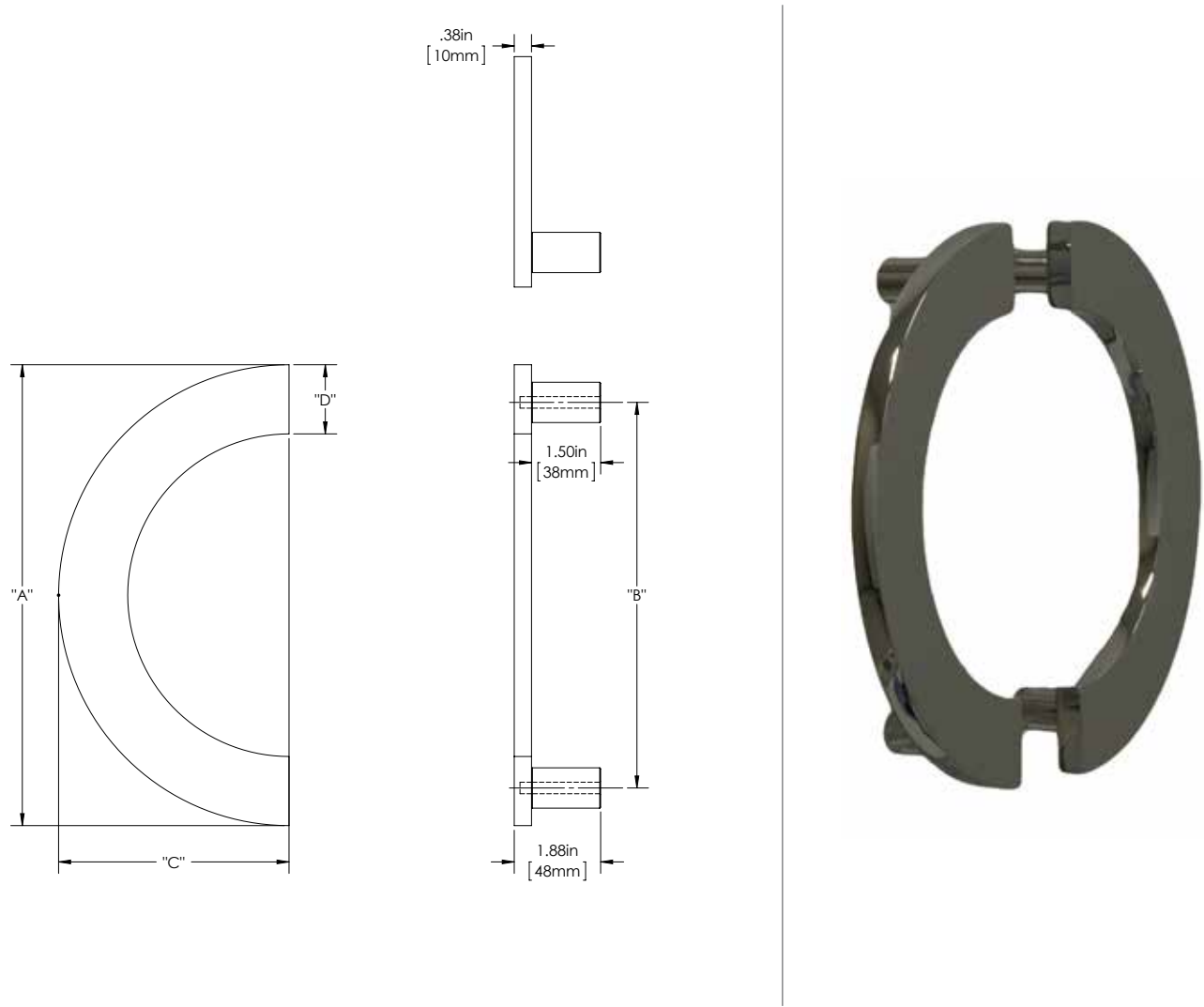
CASCADE 1

APPLICATION MEDIUM

MOUNT: SMOOTH (SMT)

MOUNT: STRAIGHT (S)

MOUNT MATERIAL: STAINLESS STEEL 304 (S4)



Product Description:
3/8" Solid C-Shaped Grip with 3/4" Face and Straight Round Mounts

Material:
Stainless Steel

Finish Description:
US32D, BSS Brushed Stainless; US32, PSS Polished Stainless; US19, MBK Matte Black PC; US10B, LTH Lithonia PC

Custom sizes & finishes available upon request.

Overall Height "A"	Center To Center "B"	Face "D"	Overall Width "C"
6"(152mm)	4 1/2"(114mm)	3/4"(19mm)	3"(76mm)
12"(229mm)	10 1/2"(267mm)	1 1/2"(38mm)	6"(152mm)

CASCADE 2CSD

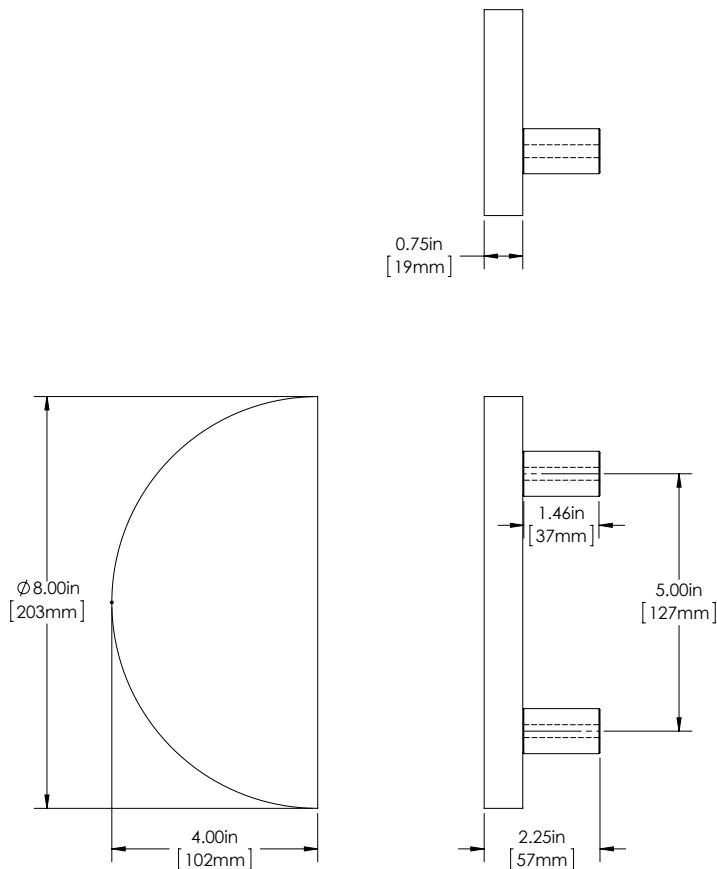
CASCADE 2

APPLICATION MEDIUM

MOUNT: SMOOTH (SMT)

MOUNT: STRAIGHT (S)

MOUNT MATERIAL: BRASS (BR)



Product Description:
3/8" Solid Half Circle (Moon) 8" X 4" Grip with Straight Round Mounts

Material:
Brass

Finish Description:
US11, AGB Aged Brass; US5, ATB Antique Brass; US3, PLB Polished Brass; US4, SNB Satin Brass; US10B, ORB Oil Rubbed Bronze; US26, PLC Polished Chrome; US26D, SNC Satin Chrome; US14, PLN Polished Nickel; US15, SNN Satin Nickel; US19, MBK Matte Black PC; US10B, LTH Lithonia PC

Custom sizes & finishes available upon request.

Overall Height	Center To Center	Overall Width	Thickness
8"(203mm)	5"(127mm)	4"(102mm)	3/4"(19mm)

CASCADE 2CSD

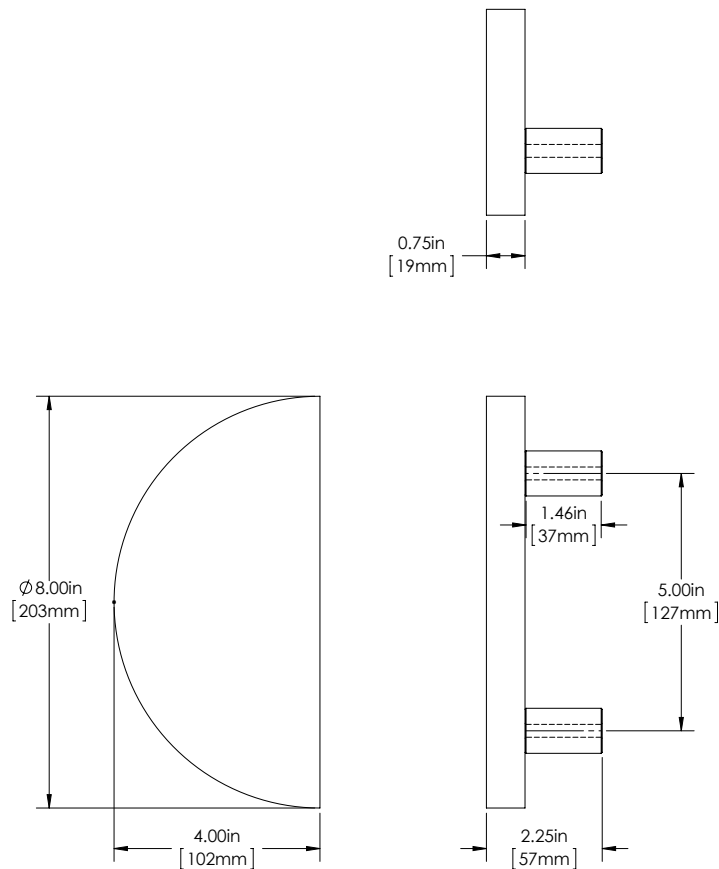
CASCADE 2

APPLICATIONMEDIUM

MOUNT: SMOOTH (SMT)

MOUNT: STRAIGHT (S)

MOUNT MATERIAL: ALUMINUM (AL)



Product Description:
3/8" Solid Half Circle (Moon) 8" X 4" Grip with Straight Round Mounts

Material:
Aluminum

Finish Description:
Mount(s) - US 28, BAL Brushed Aluminum, US19, MBK Matte Black PC; US10B, LTH Lithonia PC

Custom sizes & finishes available upon request.

Overall Height	Center To Center	Overall Width	Thickness
8"(203mm)	5"(127mm)	4"(102mm)	3/4"(19mm)

CASCADE 2CSD

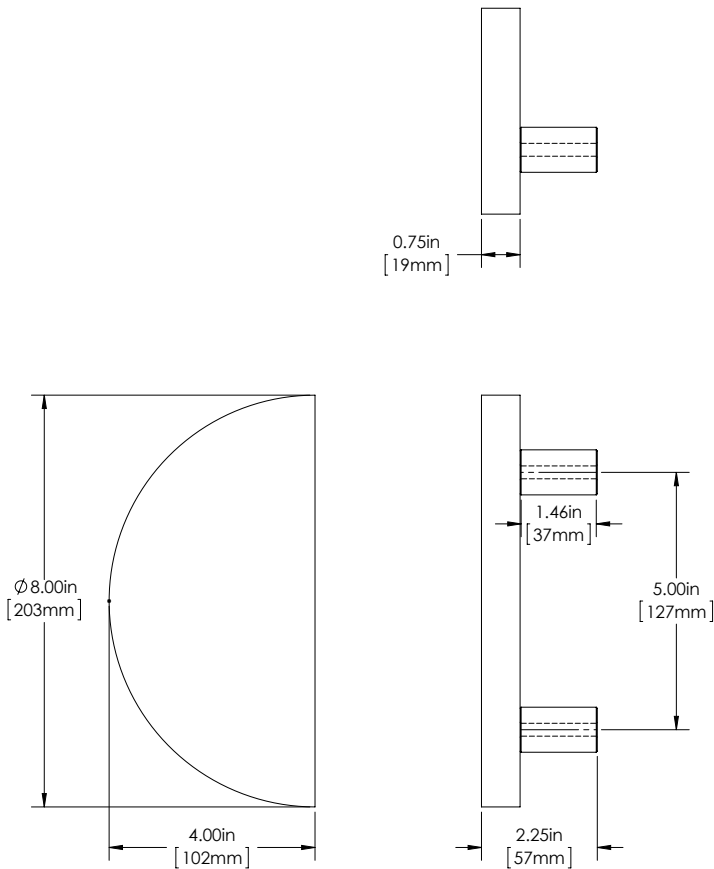
CASCADE 2

APPLICATIONMEDIUM

MOUNT: SMOOTH (SMT)

MOUNT: STRAIGHT (S)

MOUNT MATERIAL: STAINLESS STEEL 304 (S4)



Product Description:
3/8" Solid Half Circle (Moon) 8" X 4" Grip with Straight Round Mounts

Material:
Stainless Steel

Finish Description:
US32D, BSS Brushed Stainless; US32, PSS Polished Stainless; US19, MBK Matte Black PC; US10B, LTH Lithonia PC

Custom sizes & finishes available upon request.

Overall Height	Center To Center	Overall Width	Thickness
8"(203mm)	5"(127mm)	4"(102mm)	3/4"(19mm)

CASCADE 2

CSD

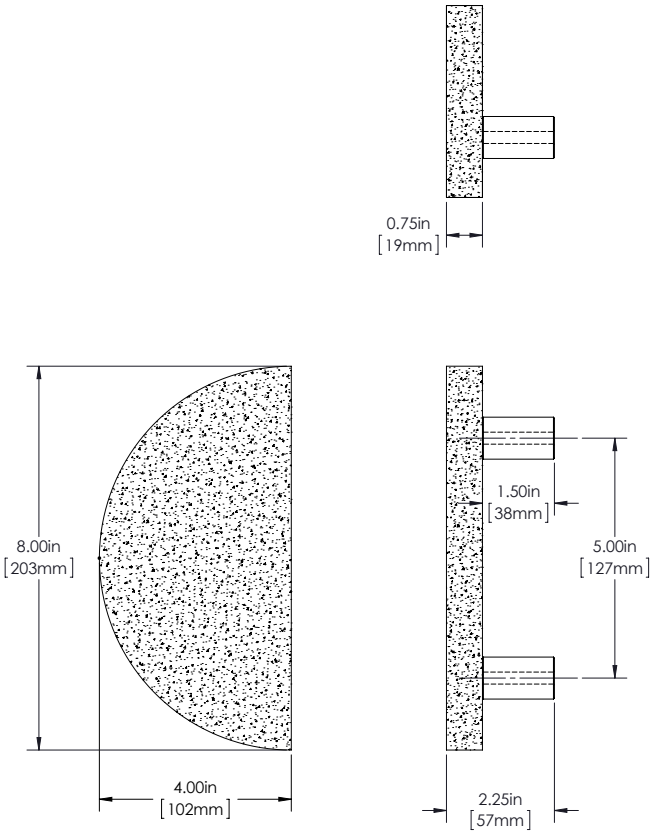
CASCADE 3

APPLICATION MEDIUM

MOUNT: HAMMERED (HMR)

MOUNT: STRAIGHT(S)

MOUNT MATERIAL: BRASS (BR)



Product Description:
3/8" Solid Hammered Half Circle (Moon) 8" X 4" Grip with Smooth Straight Round Mounts

Material:
Brass

Finish Description:
US11, AGB Aged Brass; US5, ATB Antique Brass; US3, PLB Polished Brass; US4, SNB Satin Brass; US10B, ORB Oil Rubbed Bronze; US26, PLC Polished Chrome; US26D, SNC Satin Chrome; US14, PLN Polished Nickel; US15, SNN Satin Nickel; US19, MBK Matte Black PC; US10B, LTH Lithonia PC

Overall Height	Center To Center	Overall Width	Thickness
8"(203mm)	5"(127mm)	4"(102mm)	3/4"(19mm)

Custom sizes & finishes available upon request.