

DELONG

DLG

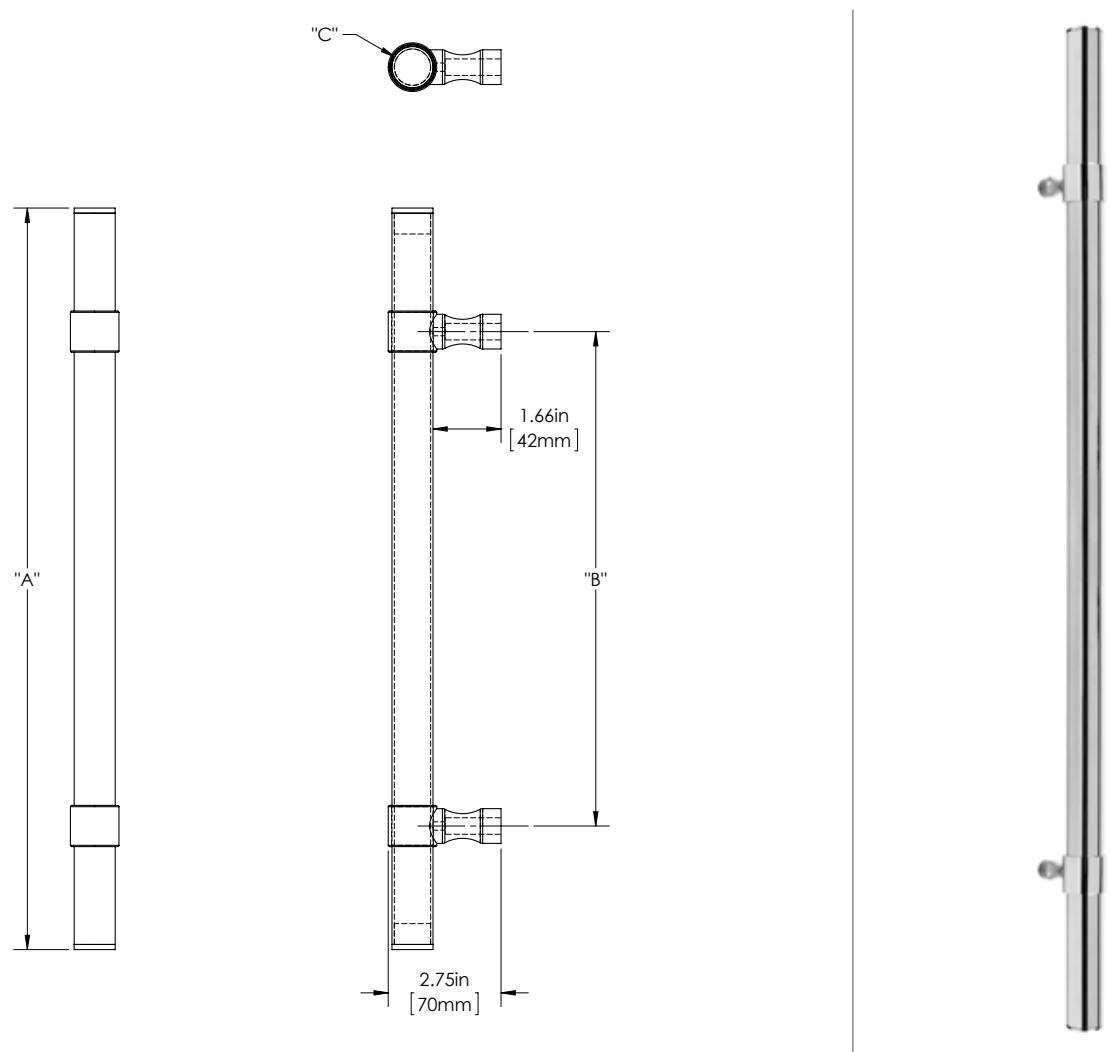
DELONG 1

100 SERIES (MEDIUM APPLICATIONS)

GRIP: SMOOTH (SMT)

MOUNT: STRAIGHT (S)

GRIP MATERIAL: STAINLESS STEEL 304 (S4)



Product Description:
1" Tubular Round Grip with End Caps in Stainless Steel and Wrap Around Hourglass Mounts in Brass

Material:
Mount(s) - Brass

Finish Description:
Grip - US32D, BSS Brushed Stainless; US32, PSS Polished Stainless; MBK Matte Black PC; US10B, LTH Lithonia PC US11, AGB Aged Brass; US5, ATB Antique Brass; US3, PLB Polished Brass; US4, SNB Satin Brass; US10B, ORB Oil Rubbed Bronze; US26, PLC Polished Chrome; US26D, SNC Satin Chrome; US14, PLN Polished Nickel; US15, SNN Satin Nickel; US19, MBK Matte Black PC; US10B, LTH Lithonia PC

Custom sizes & finishes available upon request.
*Recommended 3rd additional bracket for longer length.

| Overall Length "A" | Center To Center "B" | Overall Diameter "C" |
|--------------------|----------------------|----------------------|
| 12"(305mm) | 8"(203mm) | 1"(25mm) |
| 24"(610mm) | 18"(457mm) | 1"(25mm) |
| 36"(914mm) | 24"(610mm) | 1"(25mm) |
| 48"(1219mm) | 36"(914mm) | 1"(25mm) |
| 60"(1524mm) | 48"(1219mm) | 1"(25mm) |
| 72"(1829mm) | 60"(1524mm) | 1"(25mm) |
| 84"(2134mm) | 66"(1676mm) | 1"(25mm) |
| 96"(2438mm) | 72"(1829mm) | 1"(25mm) |
| 108"(2743mm) | 84"(2134mm) | 1"(25mm) |
| *120"(3048mm) | 96"(2438mm) | 1"(25mm) |

DELONG

DLG

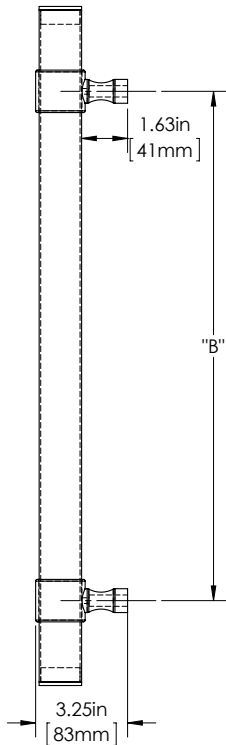
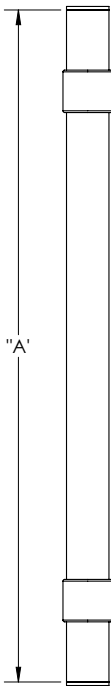
DELONG 2

150 SERIES (HEAVY APPLICATIONS)

GRIP: SMOOTH (SMT)

MOUNT: STRAIGHT (S)

GRIP MATERIAL: STAINLESS STEEL 304 (S4)



Product Description:
1 1/2" Tubular Round Grip with End Caps in Stainless Steel and Wrap Around Hourglass Mounts in Brass

Material:
Mount(s) - Brass

Finish Description:
Grip - US32D, BSS Brushed Stainless; US32, PSS Polished Stainless; MBK Matte Black PC; US10B, LTH Lithonia PC
US11, AGB Aged Brass; US5, ATB Antique Brass; US3, PLB Polished Brass; US4, SNB Satin Brass; US10B, ORB Oil Rubbed Bronze; US26, PLC Polished Chrome; US26D, SNC Satin Chrome; US14, PLN Polished Nickel; US15, SNN Satin Nickel; US19, MBK Matte Black PC; US10B, LTH Lithonia PC

Custom sizes & finishes available upon request.
*Recommended 3rd additional bracket for longer length.

| Overall Length "A" | Center To Center "B" | Overall Diameter "C" |
|--------------------|----------------------|----------------------|
| 18"(457mm) | 12"(305mm) | 1 1/2"(38mm) |
| 24"(610mm) | 18"(457mm) | 1 1/2"(38mm) |
| 36"(914mm) | 24"(610mm) | 1 1/2"(38mm) |
| 48"(1219mm) | 36"(914mm) | 1 1/2"(38mm) |
| 60"(1524mm) | 48"(1219mm) | 1 1/2"(38mm) |
| 72"(1829mm) | 60"(1524mm) | 1 1/2"(38mm) |
| 84"(2134mm) | 66"(1676mm) | 1 1/2"(38mm) |
| 96"(2438mm) | 72"(1829mm) | 1 1/2"(38mm) |
| 108"(2743mm) | 84"(2134mm) | 1 1/2"(38mm) |
| *120"(3048mm) | 96"(2438mm) | 1 1/2"(38mm) |

Dimensions are approximate and provided for reference purposes only

DELONG

DLG

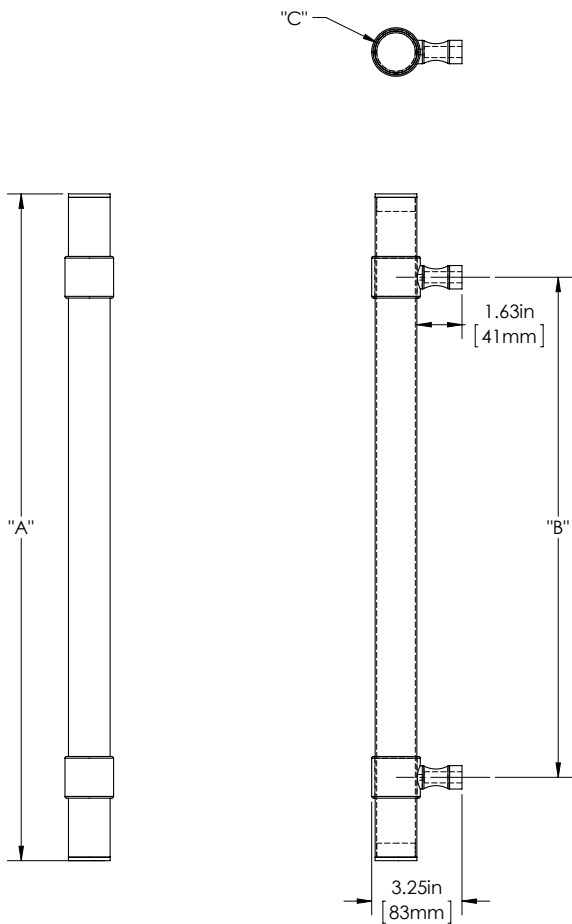
DELONG 3

100 SERIES (MEDIUM APPLICATIONS)

GRIP: SMOOTH (SMT)

MOUNT: STRAIGHT (S)

GRIP MATERIAL: BRASS (BR)



Product Description:
1" Tubular Round Grip with End Caps and Wrap Around Hourglass Mounts in Brass

Material:
Brass

Finish Description:
US11, AGB Aged Brass; US5, Antique Brass; US3, PLB Polished Brass; US4, SNB Satin Brass; US10B, ORB Oil Rubbed Bronze; US26, PLC Polished Chrome; US26D, SNC Satin Chrome; US14, PLN Polished Nickel; US15, SNB Satin Nickel; US19, MBK Matte Black PC; US10B, LTH Lithonia PC

Custom sizes & finishes available upon request.
*Recommended 3rd additional bracket for longer length.

| Overall Length "A" | Center To Center "B" | Overall Diameter "C" |
|--------------------|----------------------|----------------------|
| 12"(305mm) | 8"(203mm) | 1"(25mm) |
| 24"(610mm) | 18"(457mm) | 1"(25mm) |
| 36"(914mm) | 24"(610mm) | 1"(25mm) |
| 48"(1219mm) | 36"(914mm) | 1"(25mm) |
| 60"(1524mm) | 48"(1219mm) | 1"(25mm) |
| 72"(1829mm) | 60"(1524mm) | 1"(25mm) |
| 84"(2134mm) | 66"(1676mm) | 1"(25mm) |
| 96"(2438mm) | 72"(1829mm) | 1"(25mm) |
| 108"(2743mm) | 84"(2134mm) | 1"(25mm) |
| *120"(3048mm) | 96"(2438mm) | 1"(25mm) |

DELONG

DLG

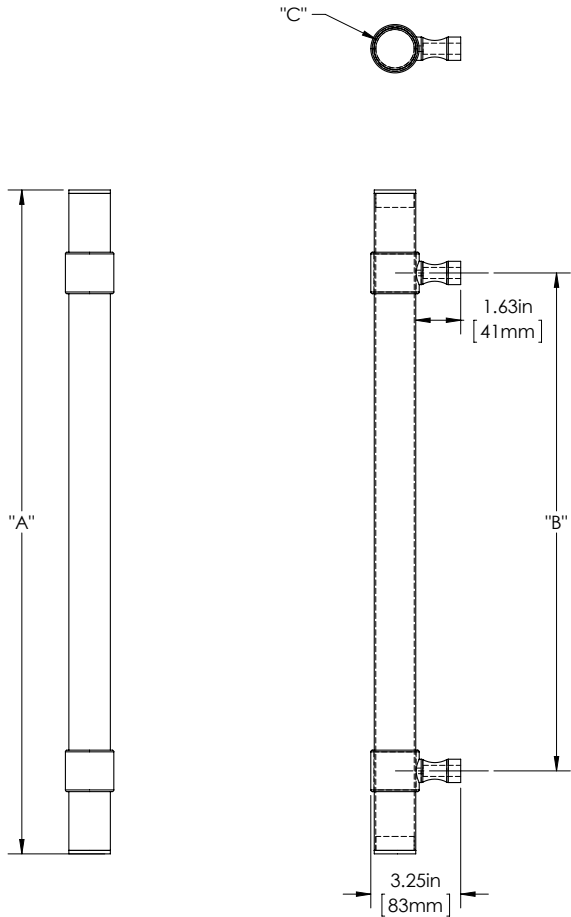
DELONG 4

150 SERIES (HEAVY APPLICATIONS)

GRIP: SMOOTH (SMT)

MOUNT: STRAIGHT (S)

MOUNT MATERIAL: BRASS (BR)



Product Description:
1 1/2" Tubular Round Grip with End Caps and Wrap Around Hourglass Mounts in Brass

Material:
Brass

Finish Description:
US11, AGB Aged Brass; US5, ATB Antique Brass; US3, PLB Polished Brass; US4, SNB Satin Brass; US10B, ORB Oil Rubbed Bronze; US26, PLC Polished Chrome; US26D, SNC Satin Chrome; US14, PLN Polished Nickel; US15, SNN Satin Nickel; US19, MBK Matte Black PC; US10B, LTH Lithonia PC

Custom sizes & finishes available upon request.
*Recommended 3rd additional bracket for longer length.

| Overall Length "A" | Center To Center "B" | Overall Diameter "C" |
|--------------------|----------------------|----------------------|
| 18"(457mm) | 12"(305mm) | 1 1/2"(38mm) |
| 24"(610mm) | 18"(457mm) | 1 1/2"(38mm) |
| 36"(914mm) | 24"(610mm) | 1 1/2"(38mm) |
| 48"(1219mm) | 36"(914mm) | 1 1/2"(38mm) |
| 60"(1524mm) | 48"(1219mm) | 1 1/2"(38mm) |
| 72"(1829mm) | 60"(1524mm) | 1 1/2"(38mm) |
| 84"(2134mm) | 66"(1676mm) | 1 1/2"(38mm) |
| 96"(2438mm) | 72"(1829mm) | 1 1/2"(38mm) |
| 108"(2743mm) | 84"(2134mm) | 1 1/2"(38mm) |
| *120"(3048mm) | 96"(2438mm) | 1 1/2"(38mm) |

Dimensions are approximate and provided for reference purposes only

DELONG DLG

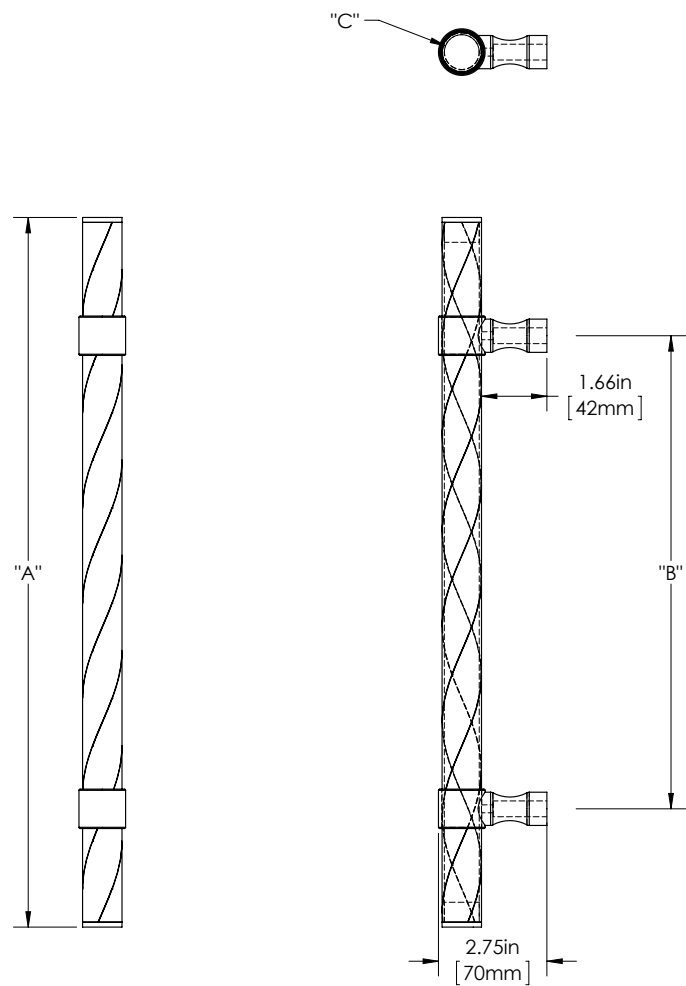
DELONG 5

100 SERIES (MEDIUM APPLICATIONS)

GRIP: ROPED (RPD)

MOUNT: STRAIGHT (S)

MOUNT MATERIAL: BRASS (BR)



Product Description:
1" Tubular Round Roped Grip with End Caps and Wrap Around Hourglass Mounts in Brass

Material:
Brass

Finish Description:
US11, AGB Aged Brass; US5, ATB Antique Brass; US3, PLB Polished Brass; US4, SNB Satin Brass; US10B, ORB Oil Rubbed Bronze; US26, PLC Polished Chrome; US26D, SNC Satin Chrome; US14, PLN Polished Nickel; US15, Satin Nickel; US19, MBK Matte Black PC; US10B, LTH Lithonia PC

Custom sizes & finishes available upon request.
*Recommended 3rd additional bracket for longer length.

| Overall Length "A" | Center To Center "B" | Overall Diameter "C" |
|--------------------|----------------------|----------------------|
| 12"(305mm) | 8"(203mm) | 1"(25mm) |
| 24"(610mm) | 18"(457mm) | 1"(25mm) |
| 36"(914mm) | 24"(610mm) | 1"(25mm) |
| 48"(1219mm) | 36"(914mm) | 1"(25mm) |
| 60"(1524mm) | 48"(1219mm) | 1"(25mm) |
| 72"(1829mm) | 60"(1524mm) | 1"(25mm) |
| 84"(2134mm) | 66"(1676mm) | 1"(25mm) |
| *96"(2438mm) | 72"(1829mm) | 1"(25mm) |

DELONG

DLG

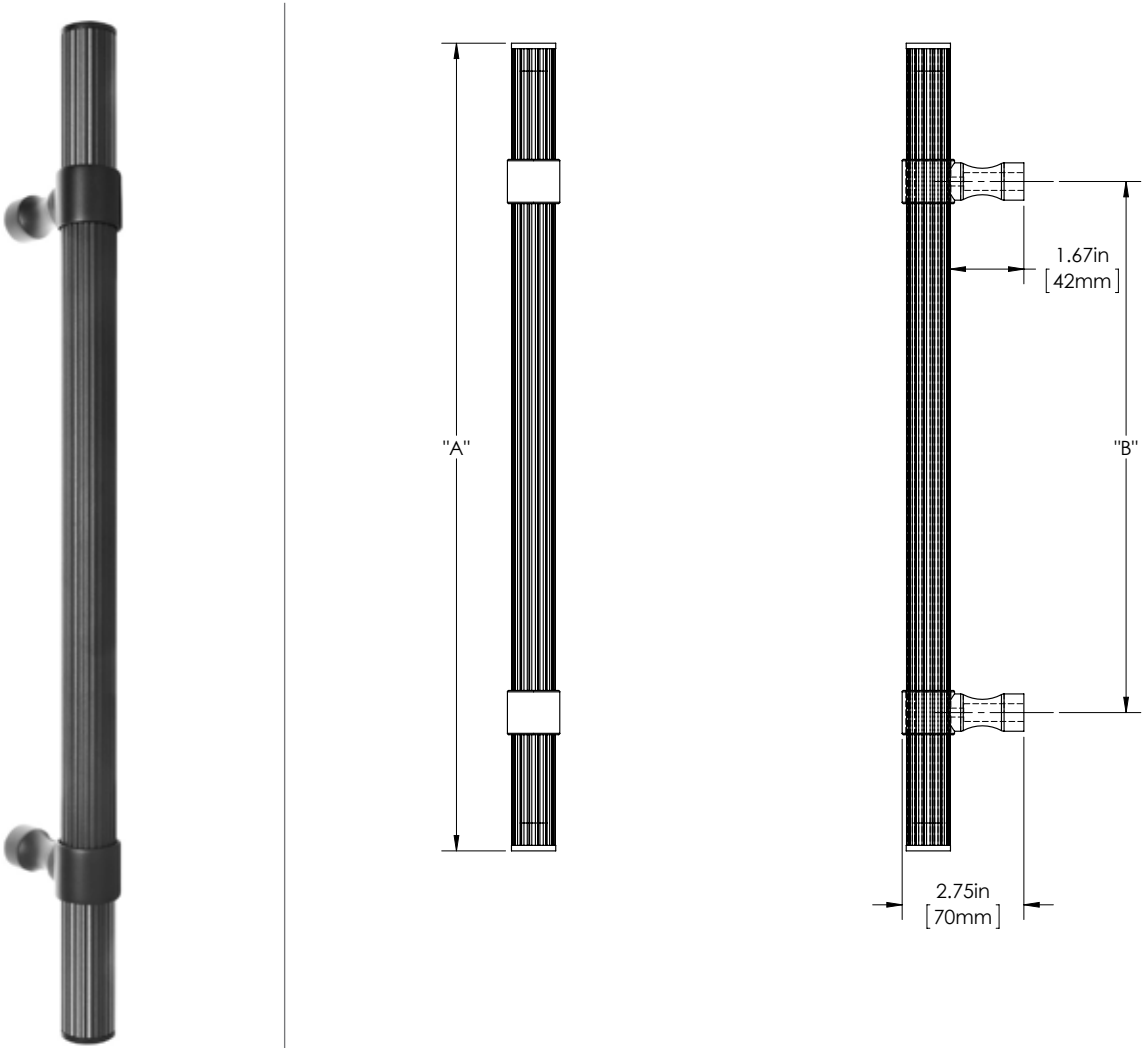
DELONG 6

100 SERIES (MEDIUM APPLICATIONS)

GRIP: REEDED (RDD)

MOUNT: STRAIGHT (S)

MOUNT MATERIAL: BRASS (BR)



Product Description:
1" Tubular Round Reeded Grip with End Caps and Wrap Around Hourglass Mounts in Brass

Material:
Brass

Finish Description:
US11, AGB Aged Brass; US5, ATB Antique Brass; US3, PLB Polished Brass; US4, SNB Satin Brass; US10B, ORB Oil Rubbed Bronze; US26, PLC Polished Chrome; US26D, SNC Satin Chrome; US14, PLN Polished Nickel; US15, SNN Satin Nickel; US19, MBK Matte Black PC; US10B, LTH Lithonia PC

Custom sizes & finishes available upon request.
*Recommended 3rd additional bracket for longer length.

| Overall Length "A" | Center To Center "B" | Overall Diameter "C" |
|--------------------|----------------------|----------------------|
| 12"(305mm) | 8"(203mm) | 1"(25mm) |
| 24"(610mm) | 18"(457mm) | 1"(25mm) |
| 36"(914mm) | 24"(610mm) | 1"(25mm) |
| 48"(1219mm) | 36"(914mm) | 1"(25mm) |
| 60"(1524mm) | 48"(1219mm) | 1"(25mm) |
| 72"(1829mm) | 60"(1524mm) | 1"(25mm) |
| 84"(2134mm) | 66"(1676mm) | 1"(25mm) |
| *96"(2438mm) | 72"(1829mm) | 1"(25mm) |