



**FIRST IMPRESSIONS**

I N T E R N A T I O N A L

FI Lawrence Commercial Hardware



### FI5016

Medium/Heavy Duty Closer

Ideally suited for commercial use

Cast aluminum body

Size 1 - 6

Tri-packed (regular, top jamb , and parallel arm mount)

UL/cUL listed

BHMA Certified ANSI A156.4 Grade 1 to 2,000,000 cycles

Three valves regulate closing, latching speed and back check.

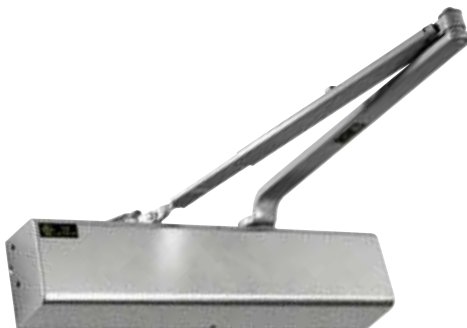
Finishes: Aluminum (AL), Bronze (DU).

Footprint H:1-3/4" (44mm)

W: 9-5/8" (244mm)

Projection: 2-3/4" (70mm)

See template for the hole dimensions



### FI816

Heavy Duty Closer

Suitable for schools, hospitals and other higher traffic application.

Size 1 - 6

Tri-packed (regular, top jamb , and parallel arm mount)

Track arm, hold open and cushion stop available

UL/cUL listed

BHMA Certified ANSI A156.4 Grade 1 to 2,000,000 cycles

3 valves regulate closing, latching speed and back check

Additional DA and BC values are standard

Finishes: Aluminum (AL), Bronze (DU) complete with cover

Optional cover finishes include US32D and US26.

Footprint H:2-7/8" (73mm)

W: 13-1/16" (332mm)

Projection: 2-1/8" (54mm)

See template for the hole dimensions