

PIONEER

PNR

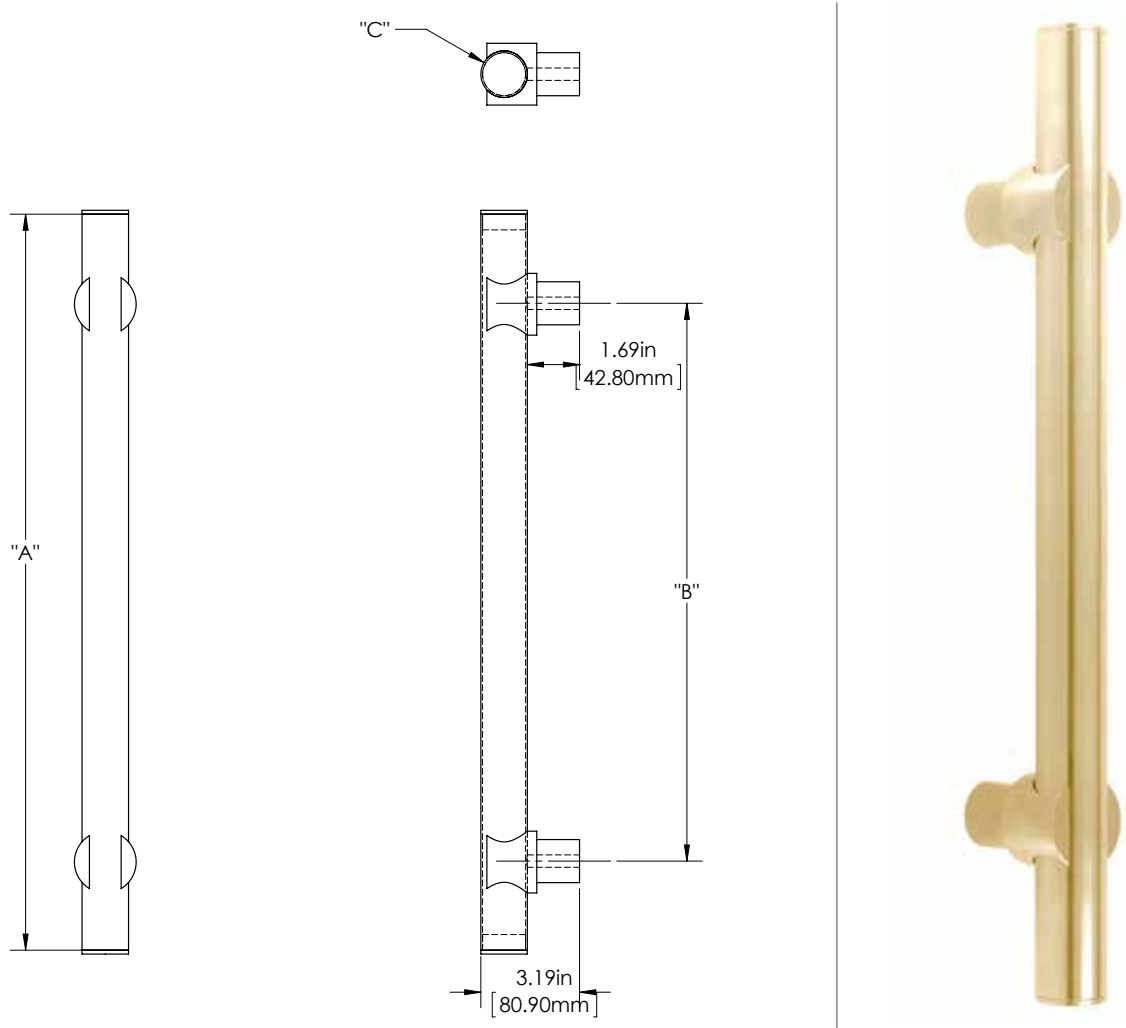
PIONEER 1

150 SERIES (HEAVY APPLICATIONS)

GRIP: SMOOTH (SMT)

MOUNT: STRAIGHT (S)

MOUNT MATERIAL: BRASS (BR)



**Product Description:**  
1 1/2" Tubular Round Grip with End Caps and Sigma Mounts in Brass

**Material:**  
Brass

**Finish Description:**  
US11, AGB Aged Brass; US5, ATB Antique Brass; US3, PLB Polished Brass; US4, SNB Satin Brass; US10B, ORB Oil Rubbed Bronze; US26, PLC Polished Chrome; US26D, SNC Satin Chrome; US14, PLN Polished Nickel; US15, PLN Satin Nickel; US19, MBK Matte Black PC; US10B, LTH Lithonia PC

Custom sizes & finishes available upon request.  
\*Recommended 3rd additional bracket for longer length.

Overall Length "A"	Center To Center "B"	Overall Diameter "C"
18"(457mm)	12"(305mm)	1 1/2"(38mm)
24"(610mm)	18"(457mm)	1 1/2"(38mm)
36"(914mm)	24"(610mm)	1 1/2"(38mm)
48"(1219mm)	36"(914mm)	1 1/2"(38mm)
60"(1524mm)	48"(1219mm)	1 1/2"(38mm)
72"(1829mm)	60"(1524mm)	1 1/2"(38mm)
84"(2134mm)	66"(1676mm)	1 1/2"(38mm)
96"(2438mm)	72"(1829mm)	1 1/2"(38mm)
108"(2743mm)	84"(2134mm)	1 1/2"(38mm)
*120"(3048mm)	96"(2438mm)	1 1/2"(38mm)

PIONEER

PNR

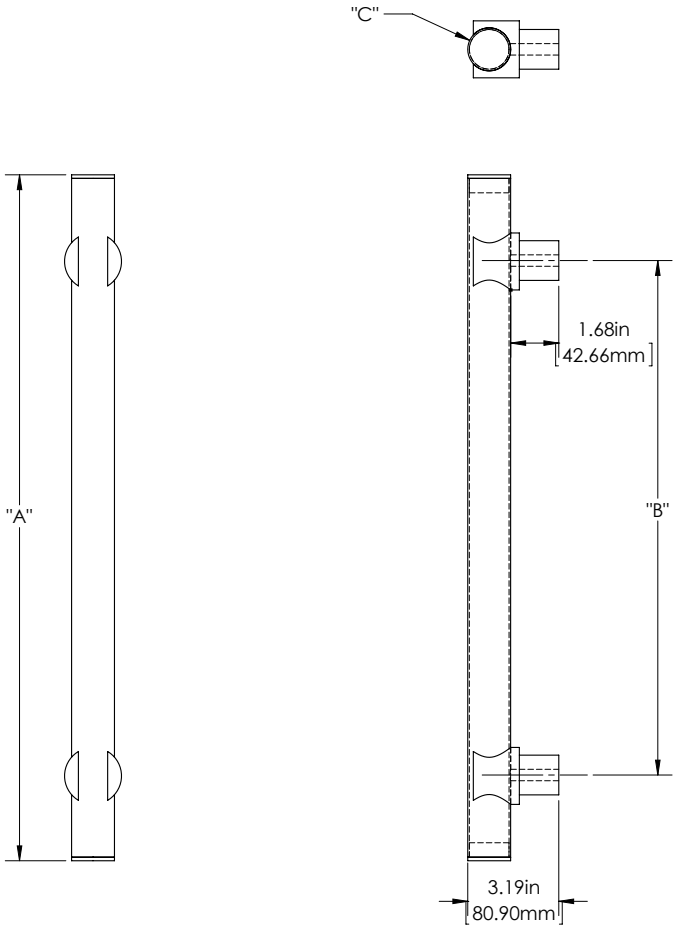
PIONEER 2

150 SERIES (HEAVY APPLICATIONS)

GRIP: SMOOTH (SMT)

MOUNT: STRAIGHT (S)

MOUNT MATERIAL: STAINLESS STEEL 316 (S6)



**Product Description:**  
1 1/2" Tubular Round Grip with End Caps and Sigma Mounts in Stainless Steel

**Material:**  
Stainless Steel

**Finish Description:**  
US32D, BSS Brushed Stainless; US32, PSS Polished Stainless; US19, MBK Matte Black PC; US10B, LTH Lithonia PC

Custom sizes & finishes available upon request.  
\*Recommended 3rd additional bracket for longer length.

Overall Length "A"	Center To Center "B"	Overall Diameter "C"
18"(457mm)	12"(305mm)	1 1/2"(38mm)
24"(610mm)	18"(457mm)	1 1/2"(38mm)
36"(914mm)	24"(610mm)	1 1/2"(38mm)
48"(1219mm)	36"(914mm)	1 1/2"(38mm)
60"(1524mm)	48"(1219mm)	1 1/2"(38mm)
72"(1829mm)	60"(1524mm)	1 1/2"(38mm)
84"(2134mm)	66"(1676mm)	1 1/2"(38mm)
96"(2438mm)	72"(1829mm)	1 1/2"(38mm)
*108"(2743mm)	84"(2134mm)	1 1/2"(38mm)
*120"(3048mm)	96"(2438mm)	1 1/2"(38mm)

Dimensions are approximate and provided for reference purposes only

PIONEER

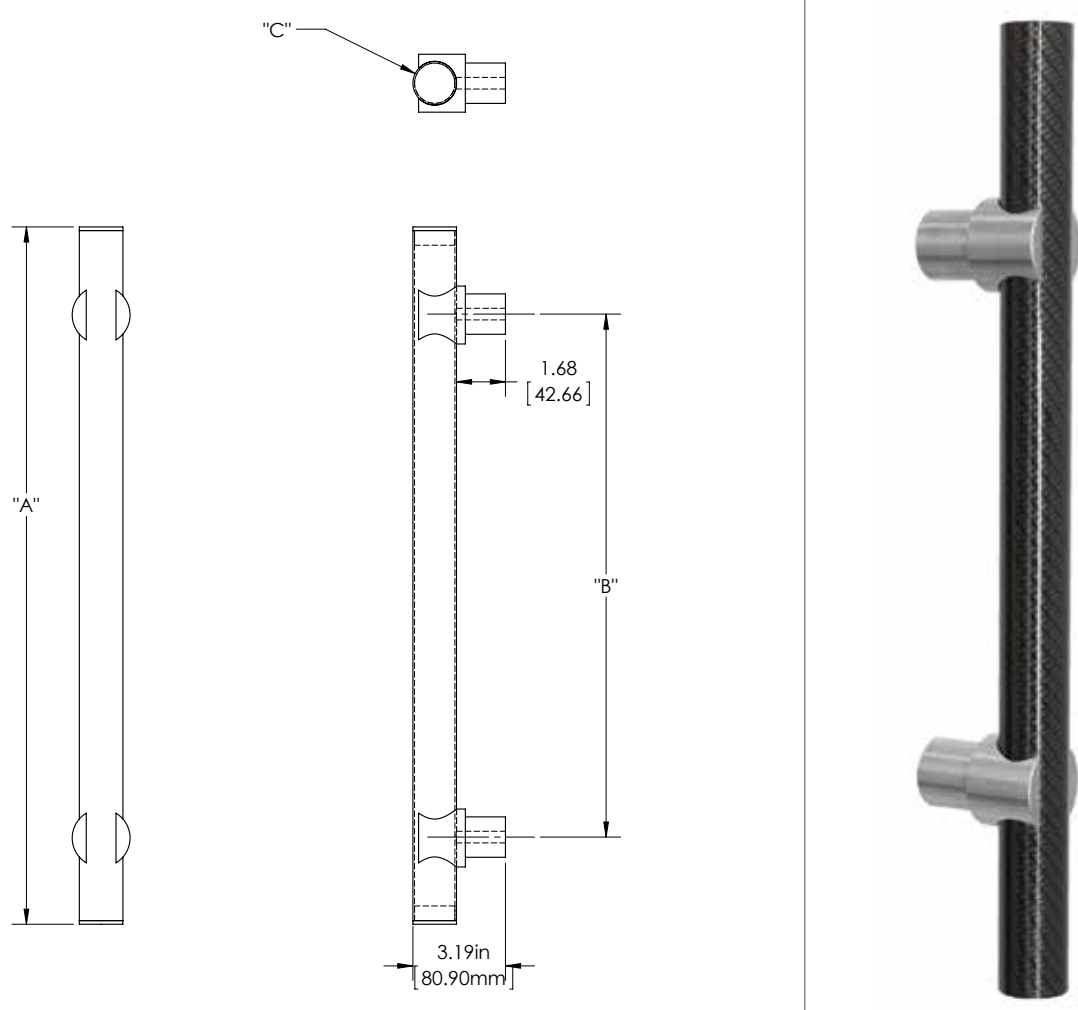
PNR

PIONEER 3

150 SERIES (HEAVY APPLICATIONS)

GRIP: CARBON FIBER

MOUNT MATERIAL: STAINLESS STEEL 304 (S4)



**Product Description:**  
1 1/2" Tubular Round Grip with End Caps in Carbon Fiber and Sigma Mounts in Stainless Steel

**Material:**  
Grip - Carbon Fiber  
Mount(s) - Stainless Steel

**Finish Description:**  
Grip - N/A  
Mount(s) - US32D, BSS Brushed Stainless; US32, PSS Polished Stainless; MBK Matte Black PC; US10B, LTH Lithonia PC

Custom sizes & finishes available upon request.

Overall Length "A"	Center To Center "B"	Overall Diameter "C"
18"(457mm)	12"(305mm)	1 1/2"(38mm)
24"(610mm)	18"(457mm)	1 1/2"(38mm)
36"(914mm)	24"(610mm)	1 1/2"(38mm)
48"(1219mm)	36"(914mm)	1 1/2"(38mm)
60"(1524mm)	48"(1219mm)	1 1/2"(38mm)
72"(1829mm)	60"(1524mm)	1 1/2"(38mm)
84"(2134mm)	66"(1676mm)	1 1/2"(38mm)
96"(2438mm)	72"(1829mm)	1 1/2"(38mm)
108"(2743mm)	84"(2134mm)	1 1/2"(38mm)
*120"(3048mm)	96"(2438mm)	1 1/2"(38mm)

PIONEER

PNR

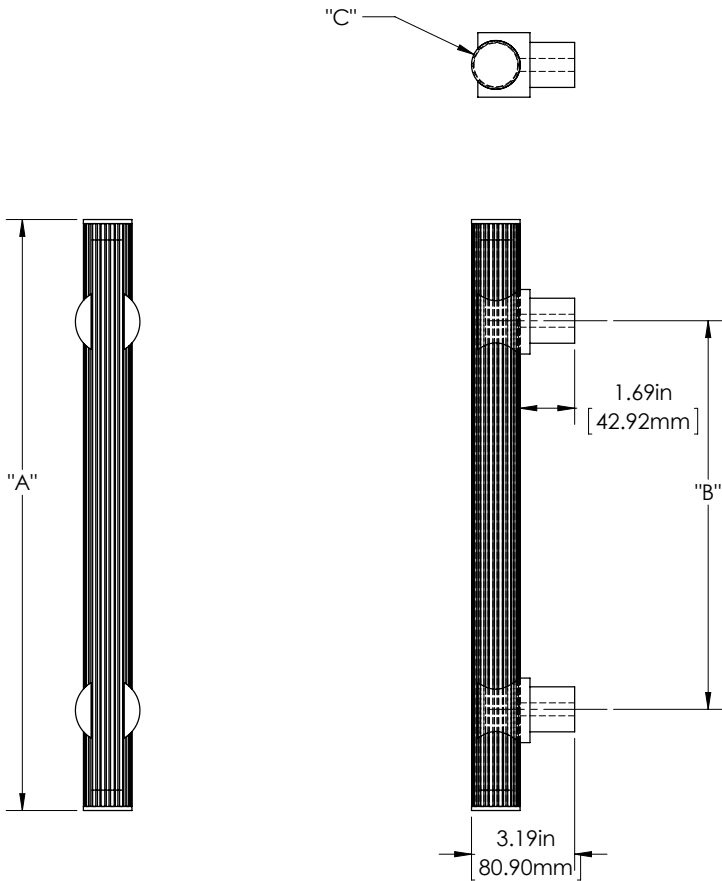
PIONEER 4

150 SERIES (HEAVY APPLICATIONS)

GRIP: REEDED (RDD)

MOUNT: STRAIGHT (S)

MOUNT MATERIAL: BRASS (BR)



**Product Description:**  
1 1/2" Tubular Round Reeded Grip with End Caps and Sigma Mounts in Brass

**Material:**  
Brass

**Finish Description:**  
US11, AGB Aged Brass; US5, ATB Antique Brass; US3, PLB Polished Brass; US4, SNB Satin Brass; US10B, ORB Oil Rubbed Bronze; US26, PLC Polished Chrome; US26D, SNC Satin Chrome; US14, PLN Polished Nickel; US15, SNN Satin Nickel; US19, MBK Matte Black PC; US10B, LTH Lithonia PC

Custom sizes & finishes available upon request.  
\*Recommended 3rd additional bracket for longer length.

Overall Length "A"	Center To Center "B"	Overall Diameter "C"
18"(457mm)	12"(305mm)	1 1/2"(38mm)
24"(610mm)	18"(457mm)	1 1/2"(38mm)
36"(914mm)	24"(610mm)	1 1/2"(38mm)
48"(1219mm)	36"(914mm)	1 1/2"(38mm)
60"(1524mm)	48"(1219mm)	1 1/2"(38mm)
72"(1829mm)	60"(1524mm)	1 1/2"(38mm)
84"(2134mm)	66"(1676mm)	1 1/2"(38mm)
96"(2438mm)	72"(1829mm)	1 1/2"(38mm)
108"(2743mm)	84"(2134mm)	1 1/2"(38mm)
*120"(3048mm)	96"(2438mm)	1 1/2"(38mm)