

SELWYN SYN

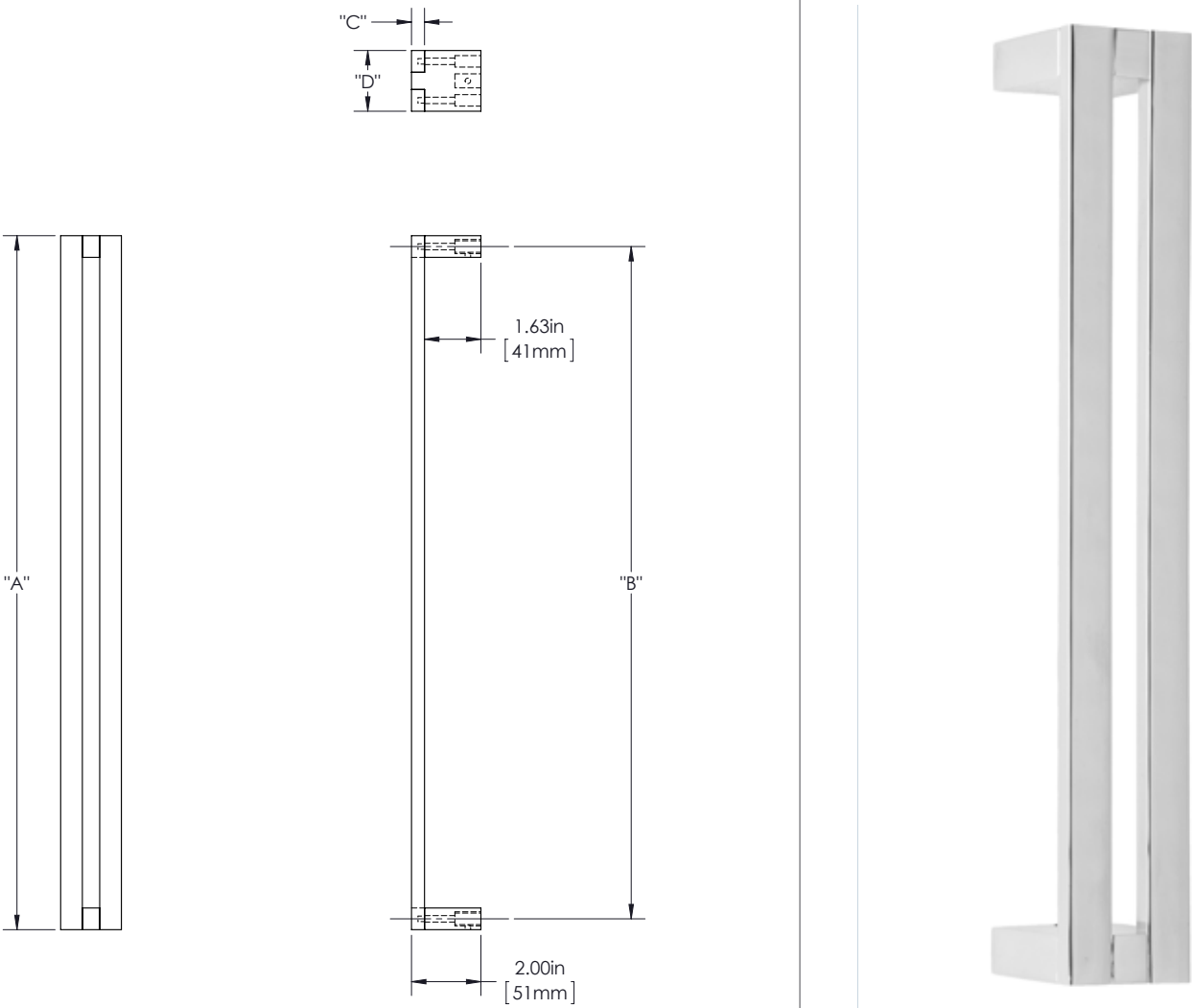
SUTTER 7

375 SERIES (LIGHT APPLICATIONS)

GRIP: DUO (DUO)

MOUNT: STRAIGHT (S)

MOUNT MATERIAL: ALUMINUM (AL)



Product Description:
3/8" Solid Duo Ruler Grip and Straight Rectangular Prong Mounts in Aluminum.

Material:
Aluminum

Finish Description:
US 28, BAL Brushed Aluminum, US19, MBK Matte Black PC;
US10B, LTH Lithonia PC

| Overall Length "A" | Center To Center "B" | Thickness "C" | Face Width "D" |
|--------------------|----------------------|---------------|----------------|
| 12"(305mm) | 11 3/8"(289mm) | 3/8"(10mm) | 1 1/2"(38mm) |
| 24"(610mm) | 23 3/8"(594mm) | 3/8"(10mm) | 1 1/2"(38mm) |
| 36"(914mm) | 35 3/8"(899mm) | 3/8"(10mm) | 1 1/2"(38mm) |

Custom sizes & finishes available upon request.

SELWYN SYN

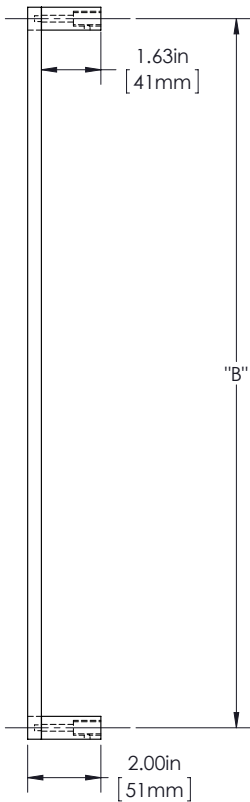
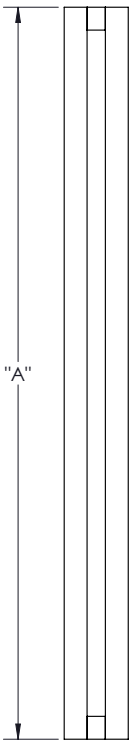
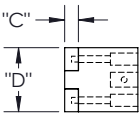
SUTTER 8

375 SERIES (LIGHT APPLICATIONS)

GRIP: DUO (DUO)

MOUNT: STRAIGHT (S)

MOUNT MATERIAL: BRASS (BR)



Product Description:
3/8" Solid Duo Ruler Grip and Straight Rectangular Prong Mounts in Brass

Material:
Brass

Finish Description:
US11, AGB Aged Brass; US5, ATB Antique Brass; US3, PLB Polished Brass; US4, SNB Satin Brass; US10B, ORB Oil Rubbed Bronze; US26, PLC Polished Chrome; US26D, SNC Satin Chrome; US14, PLN Polished Nickel; US15, SNN Satin Nickel; US19, MBK Matte Black PC; US10B, LTH Lithonia PC

| Overall Length "A" | Center To Center "B" | Thickness "C" | Face Width "D" |
|--------------------|----------------------|---------------|----------------|
| 12"(305mm) | 11 3/8"(289mm) | 3/8"(10mm) | 1 1/2"(38mm) |
| 24"(610mm) | 23 3/8"(594mm) | 3/8"(10mm) | 1 1/2"(38mm) |
| 36"(914mm) | 35 3/8"(899mm) | 3/8"(10mm) | 1 1/2"(38mm) |

Custom sizes & finishes available upon request.