

SUMMIT

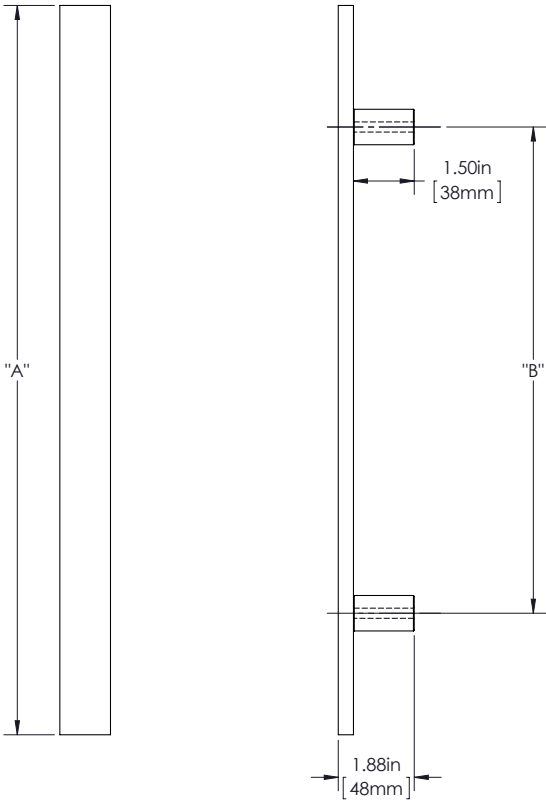
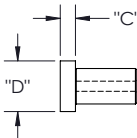
SUM

150 SERIES (HEAVY APPLICATIONS)

MOUNT: SQUARE

MOUNT: STRAIGHT (S)

MOUNT MATERIAL: STAINLESS STEEL 304 (S4)



Product Description:
5/8" Solid Ruler Grip with 1 1/2" Face and Straight Square Mounts in Stainless Steel.

Material:
Stainless Steel

Finish Description:
US32D, BSS Brushed Stainless; US32, PSS Polished Stainless; US19, MBK Matte Black PC; US10B, LTH Lithonia PC

Custom sizes & finishes available upon request.

Overall Length "A"	Center To Center "B"	Thickness "C"	Face Width "D"
12"(305mm)	8"(203mm)	5/8"(16mm)	1 1/2"(38mm)
24"(610mm)	18"(457mm)	5/8"(16mm)	1 1/2"(38mm)
36"(914mm)	24"(610mm)	5/8"(16mm)	1 1/2"(38mm)
48"(1219mm)	36"(914mm)	5/8"(16mm)	1 1/2"(38mm)
60"(1524mm)	48"(1219mm)	5/8"(16mm)	1 1/2"(38mm)
72"(1829mm)	60"(1524mm)	5/8"(16mm)	1 1/2"(38mm)
84"(2134mm)	66"(1676mm)	5/8"(16mm)	1 1/2"(38mm)
96"(2438mm)	72"(1829mm)	5/8"(16mm)	1 1/2"(38mm)
*108"(2743mm)	84"(2134mm)	5/8"(16mm)	1 1/2"(38mm)

SUMMIT

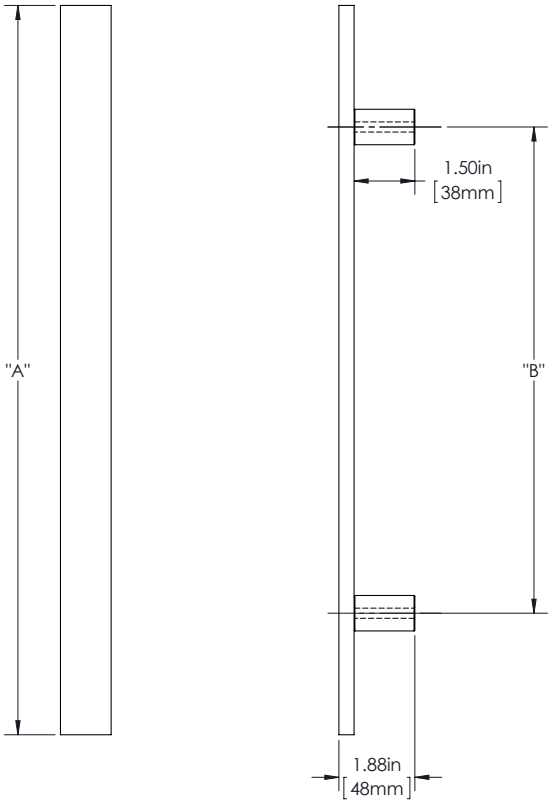
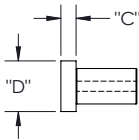
SUM

150 SERIES (HEAVY APPLICATIONS)

MOUNT: SQUARE

MOUNT: STRAIGHT (S)

MOUNT MATERIAL: BRASS (BR)



Product Description:
5/8" Solid Ruler Grip with 1 1/2" Face and Straight Square Mounts in Brass.

Material:
Brass

Finish Description:
US11, AGB Aged Brass; US5, ATB Antique Brass; US3, PLB Polished Brass; US4, SNB Satin Brass; US10B, ORB Oil Rubbed Bronze; US26, PLC Polished Chrome; US15, SNB Satin Nickel; US19, MBK Matte Black PC; US10B, LTH Lithonia PC

Custom sizes & finishes available upon request.

Overall Length "A"	Center To Center "B"	Thickness "C"	Face Width "D"
12"(305mm)	8"(203mm)	5/8"(16mm)	1 1/2"(38mm)
24"(610mm)	18"(457mm)	5/8"(16mm)	1 1/2"(38mm)
36"(914mm)	24"(610mm)	5/8"(16mm)	1 1/2"(38mm)
48"(1219mm)	36"(914mm)	5/8"(16mm)	1 1/2"(38mm)
60"(1524mm)	48"(1219mm)	5/8"(16mm)	1 1/2"(38mm)
72"(1829mm)	60"(1524mm)	5/8"(16mm)	1 1/2"(38mm)
84"(2134mm)	66"(1676mm)	5/8"(16mm)	1 1/2"(38mm)
96"(2438mm)	72"(1829mm)	5/8"(16mm)	1 1/2"(38mm)
*108"(2743mm)	84"(2134mm)	5/8"(16mm)	1 1/2"(38mm)

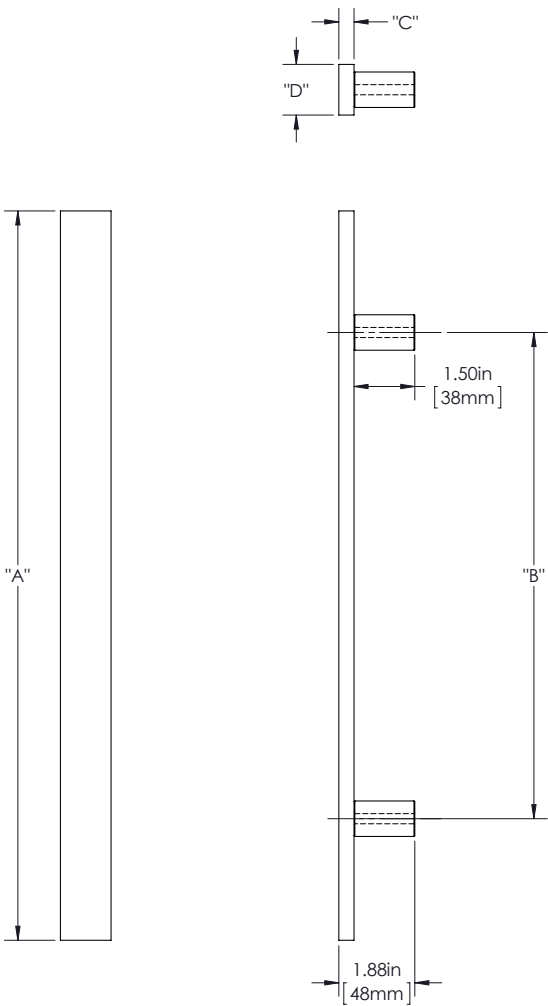
SUMMIT SUM

150 SERIES (HEAVY APPLICATIONS)

MOUNT: SQUARE

MOUNT: STRAIGHT (S)

MOUNT MATERIAL: ALUMINUM (AL)



Product Description:
5/8" Solid Ruler Grip with 1 1/2" Face and Straight Square Mounts in Aluminum.

Material:
Aluminum

Finish Description:
US 28, BAL Brushed Aluminum, US19, MBK Matte Black PC;
US10B, LTH Lithonia PC

Custom sizes & finishes available upon request.

Overall Length "A"	Center To Center "B"	Thickness "C"	Face Width "D"
12"(305mm)	8"(203mm)	5/8"(16mm)	1 1/2"(38mm)
24"(610mm)	18"(457mm)	5/8"(16mm)	1 1/2"(38mm)
36"(914mm)	24"(610mm)	5/8"(16mm)	1 1/2"(38mm)
48"(1219mm)	36"(914mm)	5/8"(16mm)	1 1/2"(38mm)
60"(1524mm)	48"(1219mm)	5/8"(16mm)	1 1/2"(38mm)
72"(1829mm)	60"(1524mm)	5/8"(16mm)	1 1/2"(38mm)
84"(2134mm)	66"(1676mm)	5/8"(16mm)	1 1/2"(38mm)
96"(2438mm)	72"(1829mm)	5/8"(16mm)	1 1/2"(38mm)
*108"(2743mm)	84"(2134mm)	5/8"(16mm)	1 1/2"(38mm)