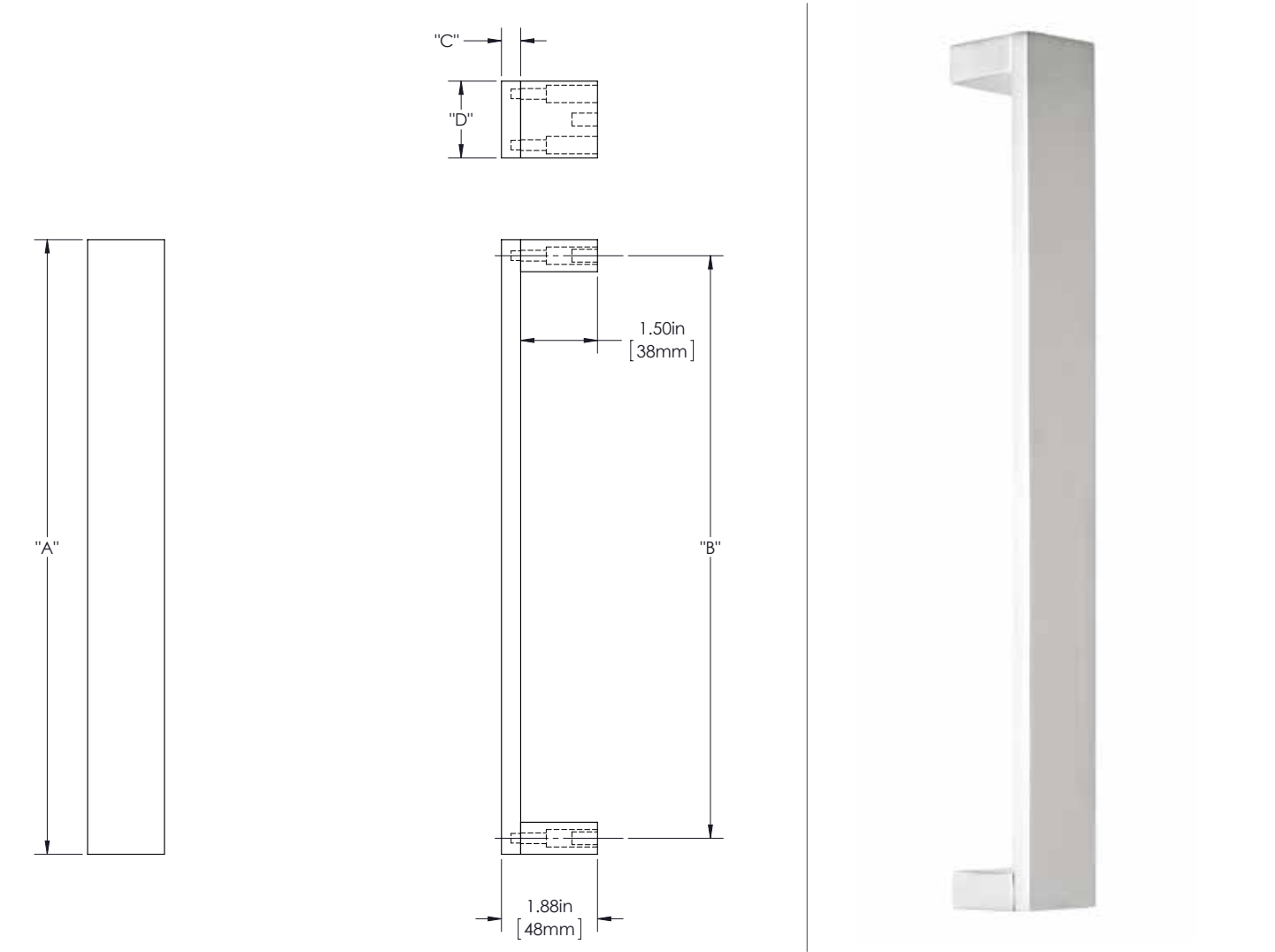


SUTTER 1

STR

SUTTER 1

- MEDIUM APPLICATIONS
- GRIP: SMOOTH (SMT)
- MOUNT: STRAIGHT (S)
- MOUNT MATERIAL: ALUMINUM (AL)



Product Description:
3/8" Solid Ruler Grip with 1 1/2" Face and Straight Flat Square Mounts in Aluminum

Material:
Aluminum

Finish Description:
US 28, BAL Brushed Aluminum, US19, MBK Matte Black PC;
US10B, LTH Lithonia PC

Custom sizes & finishes available upon request.

Overall Length "A"	Center To Center "B"	Thickness "C"	Face Width "D"
12"(305mm)	11 3/8"(289mm)	3/8"(10mm)	1 1/2"(38mm)
24"(610mm)	23 3/8"(594mm)	3/8"(10mm)	1 1/2"(38mm)
36"(914mm)	35 3/8"(899mm)	3/8"(10mm)	1 1/2"(38mm)

SUTTER 2

STR

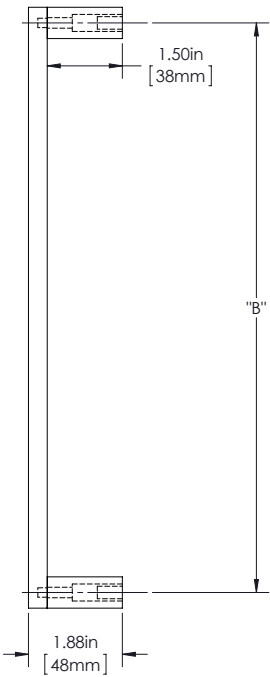
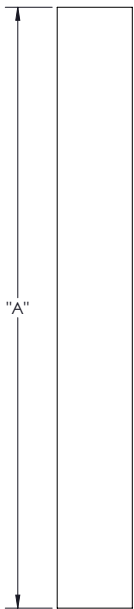
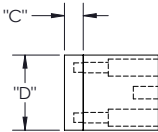
SUTTER 2

MEDIUM APPLICATIONS

GRIP: SMOOTH (SMT)

MOUNT: STRAIGHT (S)

MOUNT MATERIAL: BRASS (BR)



Product Description:

3/8" Solid Ruler Grip with 1 1/2" Face and Straight Flat Square Mounts in Brass

Material:
Brass

Finish Description:

US11, AGB Aged Brass; US5, ATB Antique Brass; US3, PLB Polished Brass; US4, SNB Satin Brass; US10B, ORB Oil Rubbed Bronze; US26, PLC Polished Chrome; US26D, SNC Satin Chrome; US14, PLN Polished Nickel; US15, SNN Satin Nickel; US19, MBK Matte Black PC; US10B, LTH Lithonia PC

Overall Length "A"	Center To Center "B"	Thickness "C"	Face Width "D"
12"(305mm)	11 3/8"(289mm)	3/8"(10mm)	1 1/2"(38mm)
24"(610mm)	23 3/8"(594mm)	3/8"(10mm)	1 1/2"(38mm)
36"(914mm)	35 3/8"(899mm)	3/8"(10mm)	1 1/2"(38mm)

Custom sizes & finishes available upon request.

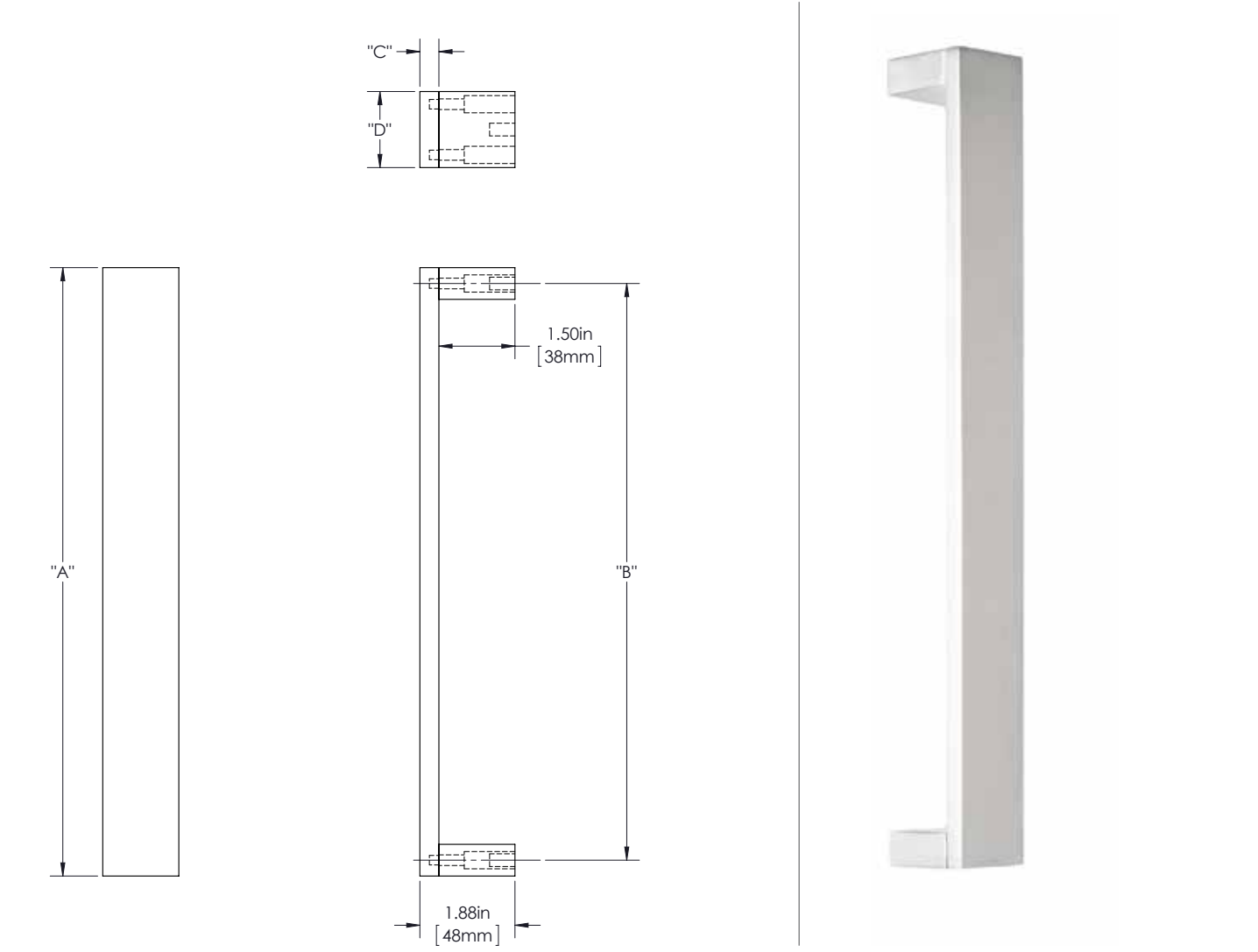
Dimensions are approximate and provided for reference purposes only

SUTTER 3

STR

SUTTER 3

- MEDIUM APPLICATIONS
- GRIP: SMOOTH (SMT)
- MOUNT: STRAIGHT (S)
- MOUNT MATERIAL: STAINLESS STEEL 304 (4S)



Product Description:
3/8" Solid Ruler Grip with 1 1/2" Face and Straight Flat Square Mounts in Stainless Steel

Material:
Stainless Steel

Finish Description:
US32D, BSS Brushed Stainless; US32, PSS Polished Stainless; US19, MBK Matte Black PC; US10B, LTH Lithonia PC

Overall Length "A"	Center To Center "B"	Thickness "C"	Face Width "D"
12"(305mm)	11 3/8"(289mm)	3/8"(10mm)	1 1/2"(38mm)
24"(610mm)	23 3/8"(594mm)	3/8"(10mm)	1 1/2"(38mm)
36"(914mm)	35 3/8"(899mm)	3/8"(10mm)	1 1/2"(38mm)

Custom sizes & finishes available upon request.

SUTTER 4

STR

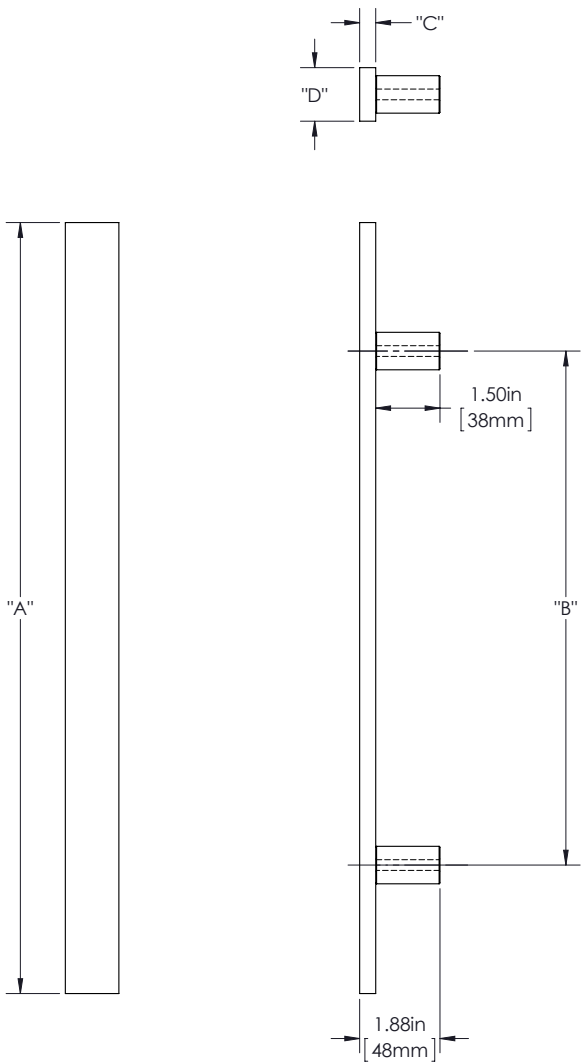
SUTTER 4

HEAVY APPLICATIONS

GRIP: SMOOTH (SMT)

MOUNT: STRAIGHT (S)

MOUNT MATERIAL: ALUMINUM (AL)



Product Description:
3/8" Solid Ruler Grip with 1 1/4" Face and Straight Round Mounts in Aluminum

Material:
Aluminum

Finish Description:
US 28, BAL Brushed Aluminum, US19, MBK Matte Black PC;
US10B, LTH Lithonia PC

Custom sizes & finishes available upon request.

Overall Length "A"	Center To Center "B"	Thickness "C"	Face Width "D"
12"(305mm)	8"(203mm)	3/8"(10mm)	1 1/4"(32mm)
24"(610mm)	18"(457mm)	3/8"(10mm)	1 1/4"(32mm)
36"(914mm)	24"(610mm)	3/8"(10mm)	1 1/4"(32mm)

SUTTER 5

STR

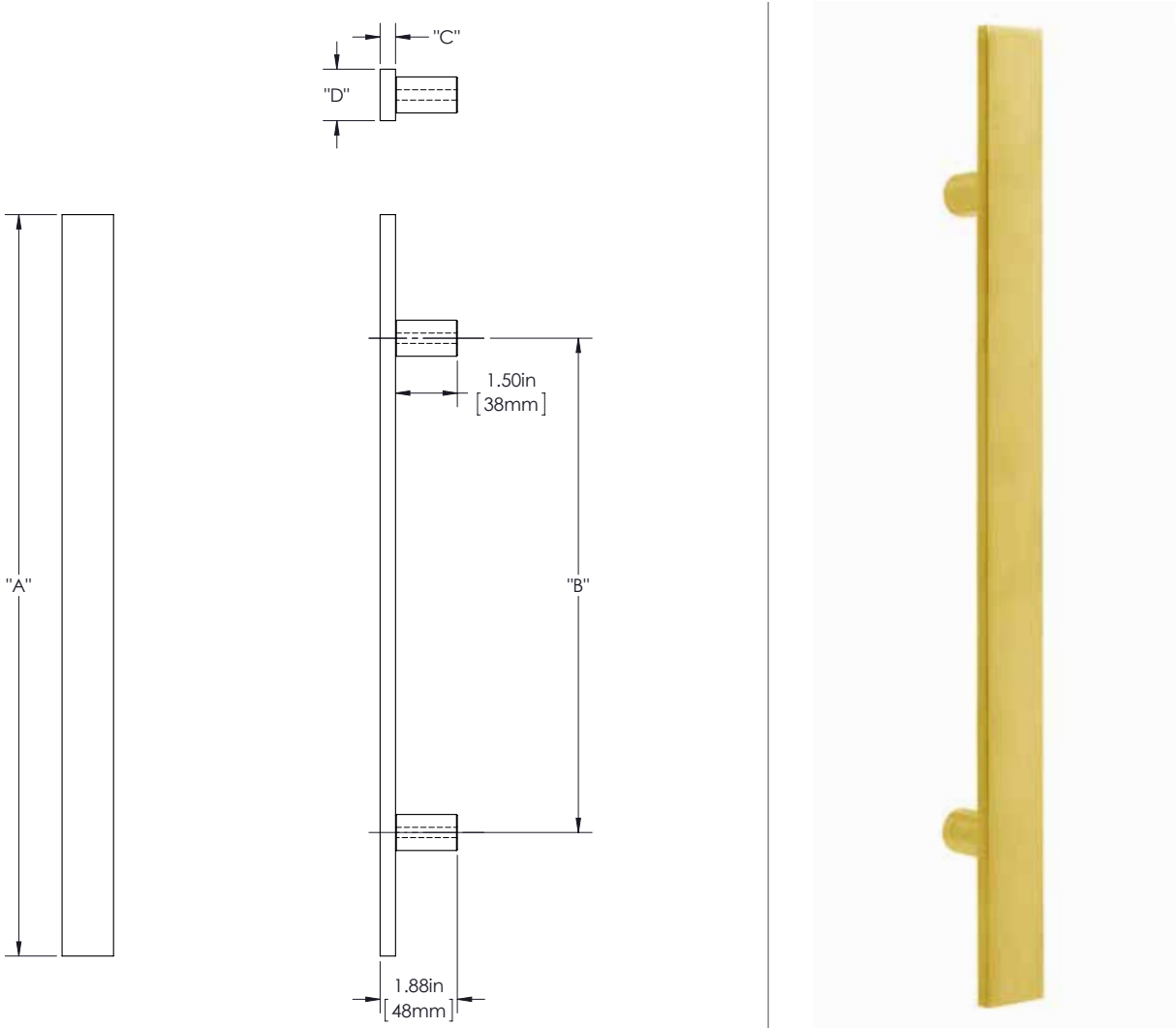
SUTTER 5

HEAVY APPLICATIONS

GRIP: SMOOTH (SMT)

MOUNT: STRAIGHT (S)

MOUNT MATERIAL: BRASS (BR)



Product Description:
3/8" Solid Ruler Grip with 1 1/4" Face and Straight Round Mounts in Brass.

Material:
Brass

Finish Description:
US11, AGB Aged Brass; US5, ATB Antique Brass; US3, PLB Polished Brass; US4, SNB Satin Brass; US10B, ORB Oil Rubbed Bronze; US26, PLC Polished Chrome; US26D, SNC Satin Chrome; PLN Polished Nickel; US15, SNN Satin Nickel; US19, MBK Matte Black PC; US10B, LTH Lithonia PC

Overall Length "A"	Center To Center "B"	Thickness "C"	Face Width "D"
12"(305mm)	8"(203mm)	3/8"(10mm)	1 1/4"(32mm)
24"(610mm)	18"(457mm)	3/8"(10mm)	1 1/4"(32mm)
36"(914mm)	24"(610mm)	3/8"(10mm)	1 1/4"(32mm)

Custom sizes & finishes available upon request.

SUTTER 6

STR

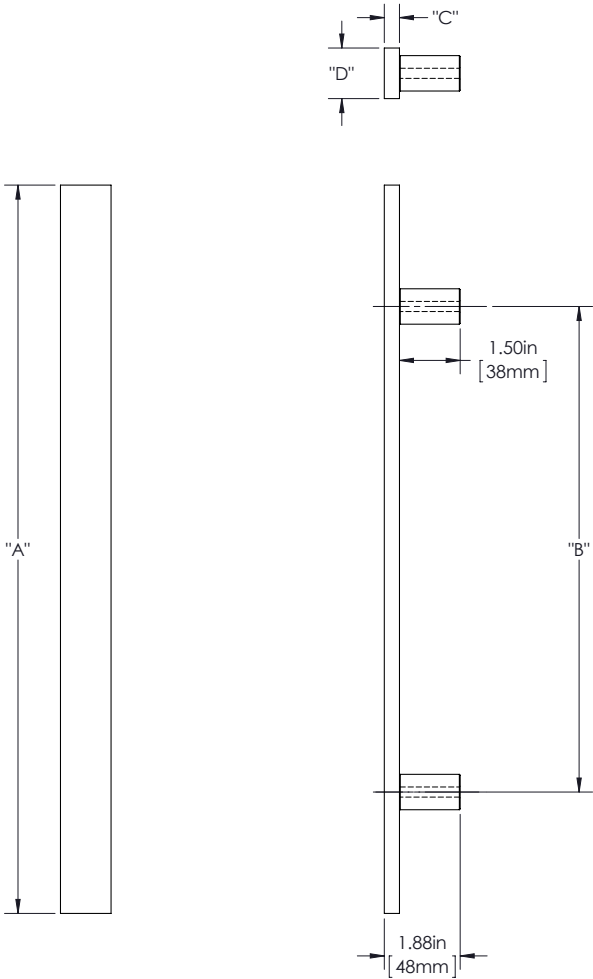
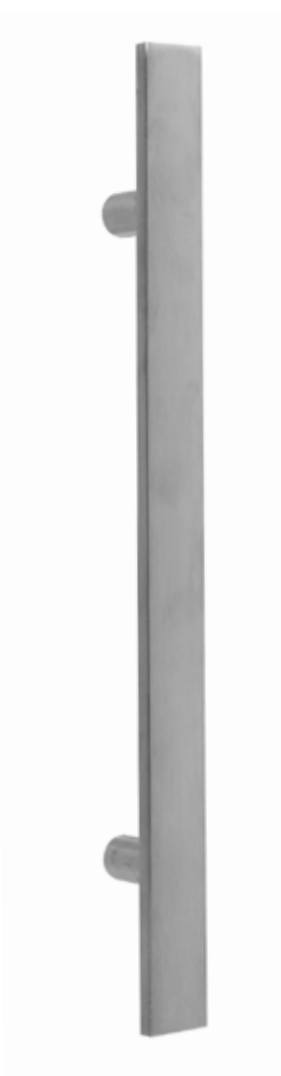
SUTTER 6

HEAVY APPLICATIONS

GRIP: SMOOTH (SMT)

MOUNT: STRAIGHT (S)

MOUNT MATERIAL: STAINLESS STEEL 304 (4S)



Product Description:
3/8" Solid Ruler Grip with 1 1/4" Face and Straight Round Mounts in Stainless Steel.

Material:
Stainless Steel

Finish Description:
US32D, BSS Brushed Stainless; US32, PSS Polished Stainless; US19, MBK Matte Black PC; US10B, LTH Lithonia PC

Overall Length "A"	Center To Center "B"	Thickness "C"	Face Width "D"
12"(305mm)	8"(203mm)	3/8"(10mm)	1 1/4"(32mm)
24"(610mm)	18"(457mm)	3/8"(10mm)	1 1/4"(32mm)
36"(914mm)	24"(610mm)	3/8"(10mm)	1 1/4"(32mm)

Custom sizes & finishes available upon request.